

electronic Primary Care Research Network (ePCRN)

UNIVERSITY OF MINNESOTA

The University of Minnesota, USA.



UNIVERSITY OF
BIRMINGHAM

The University of Birmingham, UK.



The University of California San
Francisco, USA.



Funded by the National Institutes of
Health (NIH), USA.

This project has been funded in whole or in part with Federal funds from the National Institutes of Health, under Contract No. HHS268N200425212C, "Re-engineering the Clinical Research Enterprise".

Outline

- ◆ Who is ePCRn?
- ◆ Why ePCRn is needed?
- ◆ What is ePCRn?
- ◆ What ePCRn needs?
 - obstacles, challenges and requirements

Project team

Minnesota:

- Family Medicine
 - Kevin Peterson
 - Joe Stone
 - Pat Fontaine
 - Carol Lange
 - Adam Wolff
 - Mark Janowiec
- Computer Science
 - Stuart Speedie
 - Jon Weissman
 - Seonho Kim
 - Mike Coonrod

◆ San Francisco

- Internal medicine
 - Ida Sim

Birmingham:

- Primary Care
 - Brendan Delaney
 - Richard Hobbs
 - Darren Douglas
 - Hardeep Sandhar
- Electrical Engineering
 - Theo Arvanitis
- Computer Science
 - Marta Kwiatkowska
- Joint appointments
 - Adel Taweel
 - Lei Zhao

Problems and Challenges



A big issue with capacity and methodology

- ◆ Even common clinical problems need far bigger numbers in RCTs than a single practice can provide.
- ◆ Primary Care RCTs need Research networks.
- ◆ Research Networks need infrastructure.

The NIH Roadmap for Medical Research

- ◆ Position NIH to address evolving public health challenges
- ◆ Accelerate the pace of discoveries
- ◆ Develop more rapid two way translation: from Laboratories to patients and vice versa

ePCRN clinical Perspective



Primary care
clinic

Research



Research



Translation



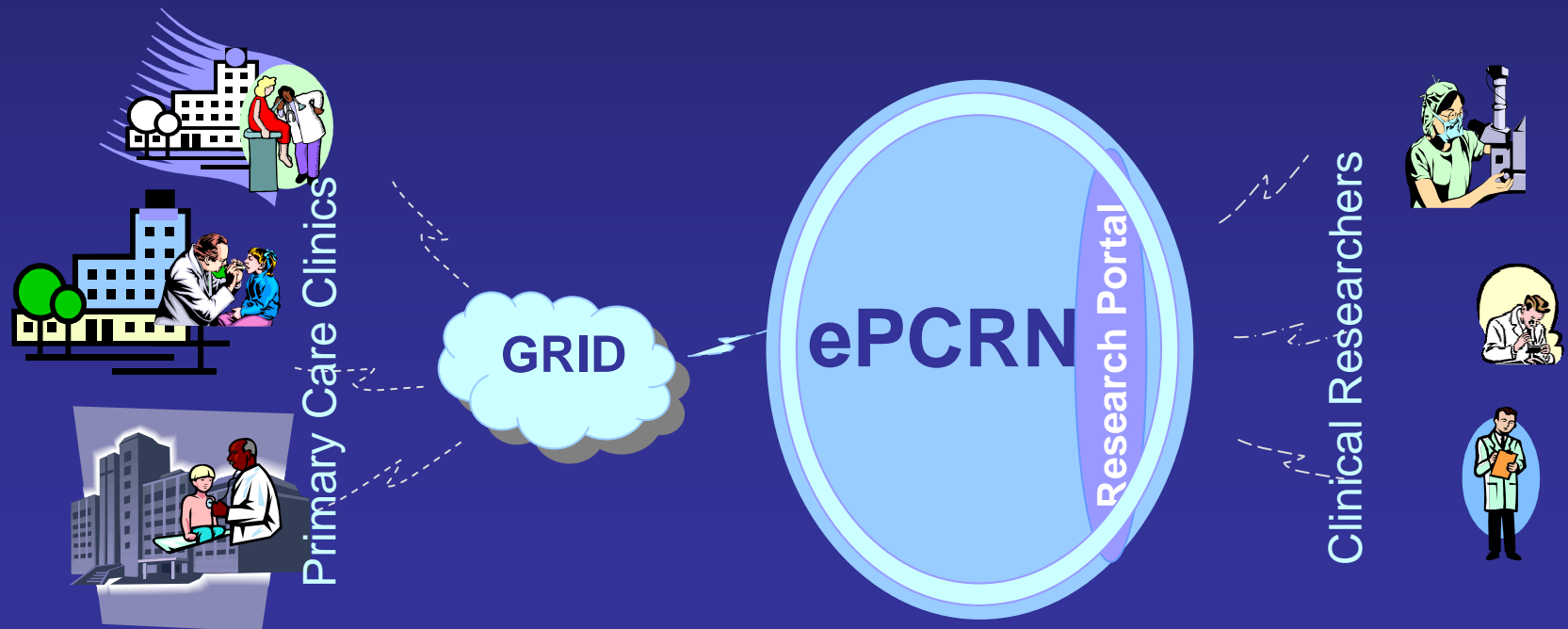
Quality
Improvement



Researcher

Main Goals

- ◆ To establish an RCT management system for US Primary Care
- ◆ To establish a secure distributed query process for US EHRs
- ◆ To establish a secure research portal for the US FPBRN



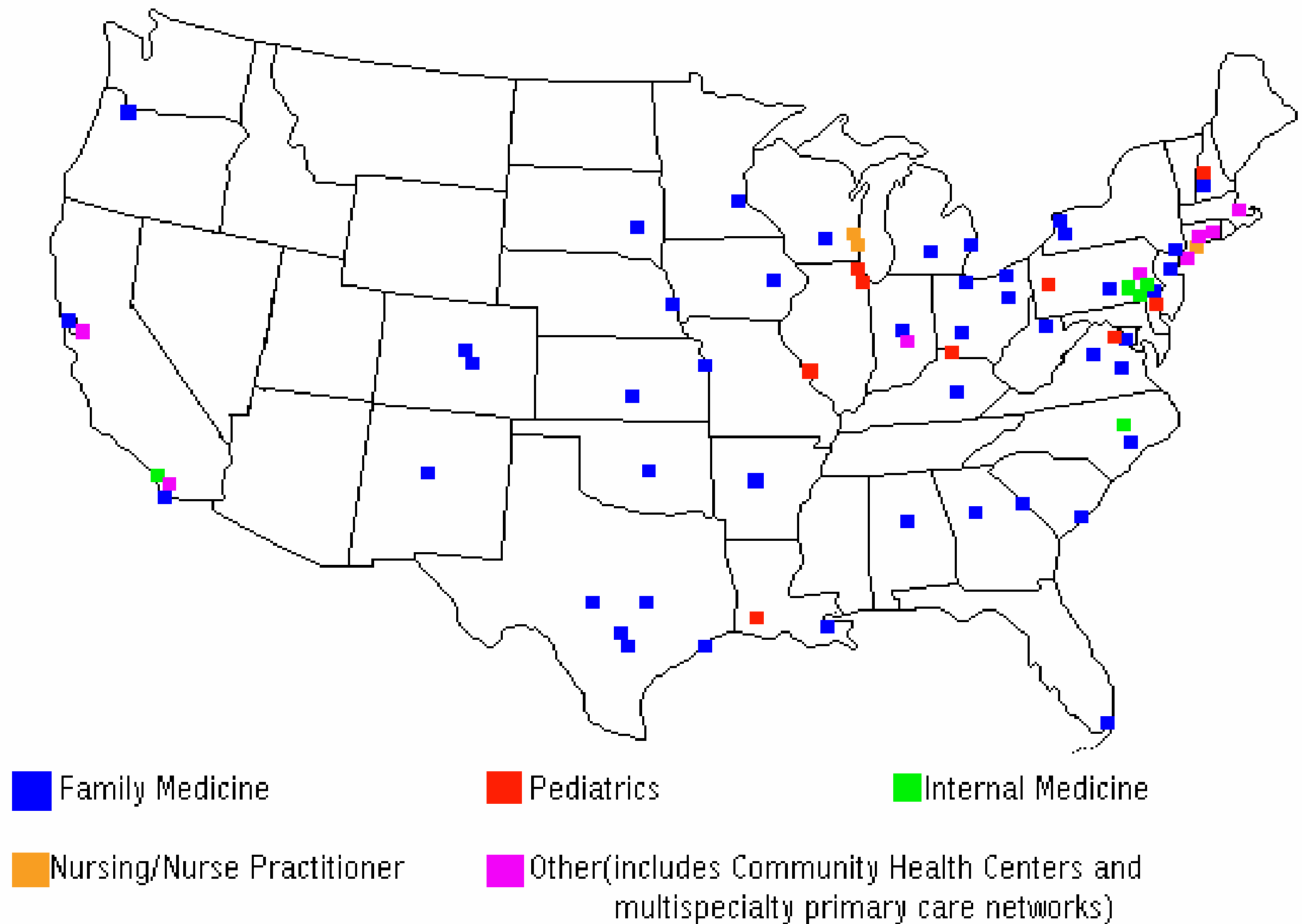
eScience and Primary Care RCTs and epidemiology

- ◆ The Internet is about accessing information
- ◆ The eScience/Grid/Internet 2 is about sharing information, enabling:
 - Large amounts of data widely distributed
 - Robust security, provenance preservation
 - Virtual community and communication

ePCRN Research Collaboration Centers



Geographic Location of Headquarters for Primary Care PBRNs in the US



Relationships

- ◆ With the 'Roadmap' projects
 - Represent roadmap with CaBIG
 - BRIDG model
 - CDISC/RIM
- ◆ With WHO GlobalTrialBank
- ◆ With UK MRC e-Science projects
 - NHS CfH

CaBIG

- ◆ <https://cabig.nci.nih.gov/>
- ◆ Cancer Biomedical Informatics Grid
- ◆ Funded by National Cancer Institute
 - ePCRN part of two groups
 - CTMS - Clinical Trial Management Systems
 - EVS - Vocabularies and common data elements

RCT Design

◆ Modelling

- Specification
- Comparators

◆ Piloting

- Accrual
- Consent
- Outcomes

“Operationalising” an RCT

- ◆ Ethics and research Governance
- ◆ Ascertainment
- ◆ Eligibility
- ◆ Baseline data collection
- ◆ Randomisation
- ◆ Prompt for intervention
- ◆ Follow up
- ◆ Analysis and archiving

ePCRN: Trials workpackage-1

- ◆ Develop use cases based on existing RCTs
- ◆ Develop generic use cases
- ◆ UMLS modelling of these use cases mapping to BRIDG and WHO
- ◆ Develop a generic Data model, mapping CDISC/RIM

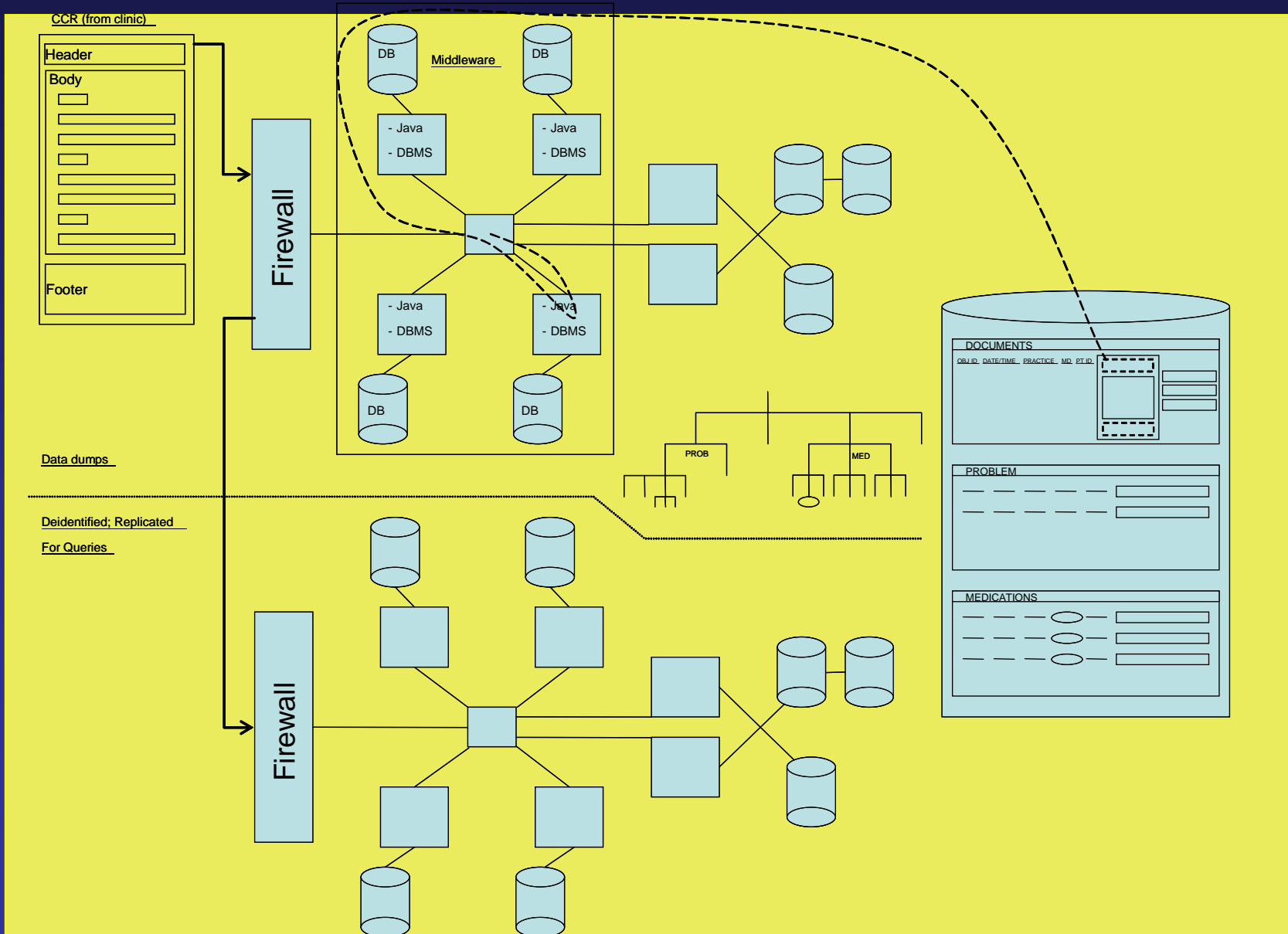
ePCRN: Trials workpackage-2

- ◆ Trial design tools and virtual pilots
- ◆ Trial protocol capture and registration
- ◆ Trial management
 - Site management
 - Subject management
 - Identification of trial subjects
 - Intervention management
 - Data collection
 - Subject present
 - From EPR

ePCRN: Distributed querying and data collection

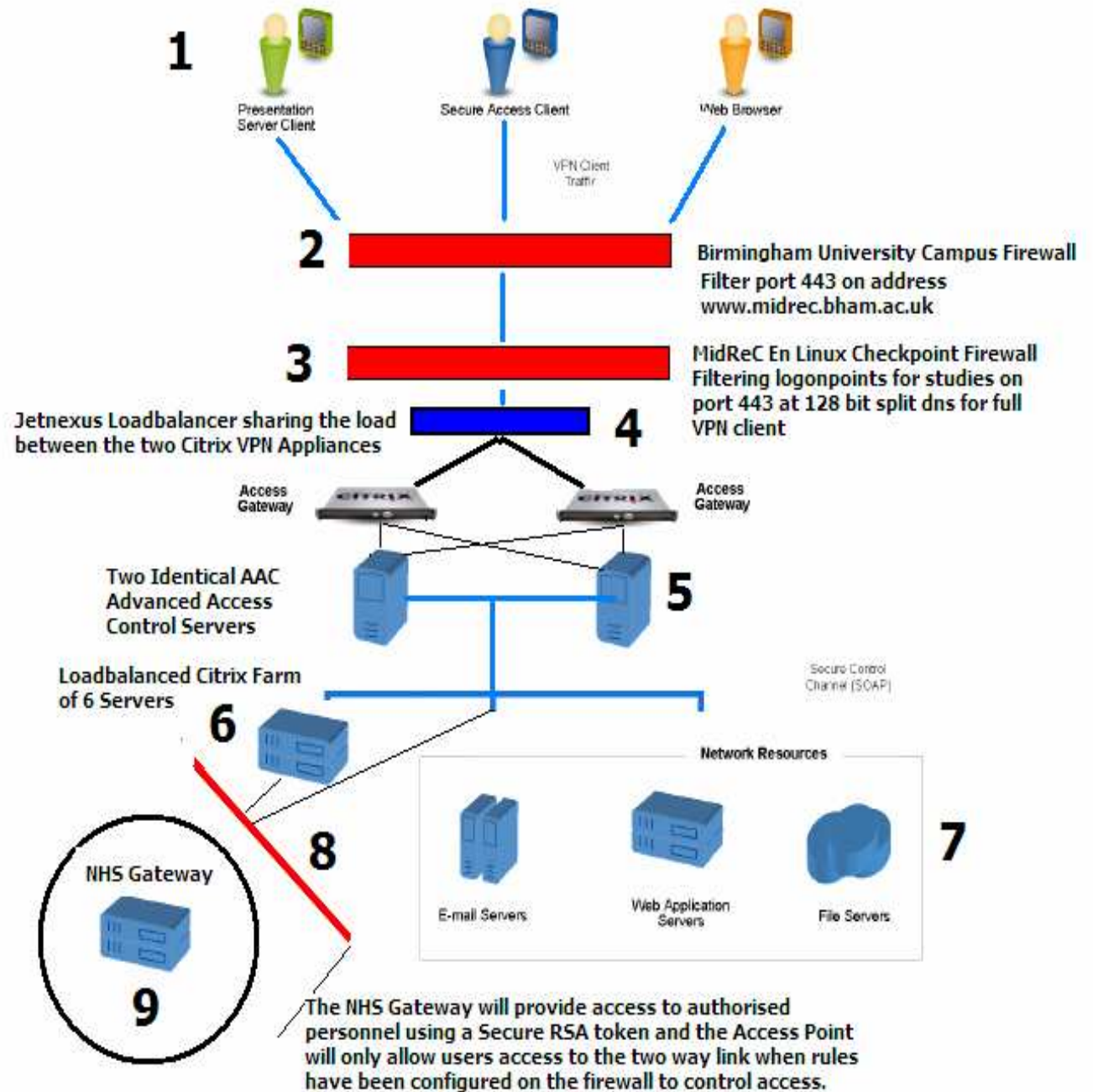
- ◆ USA EHRs have agreed to a common XML export standard using the AAFP 'Continuity of Care Record' (CCR)
- ◆ Clinic-level (mySQL) databases hold the CCR exports
- ◆ Use OGSA-DAI-based tools to extract data from the clinic-level databases.
- ◆ The CCR standard also allows data to be uploaded to the EHR.

ePCRN: Translational workpackage



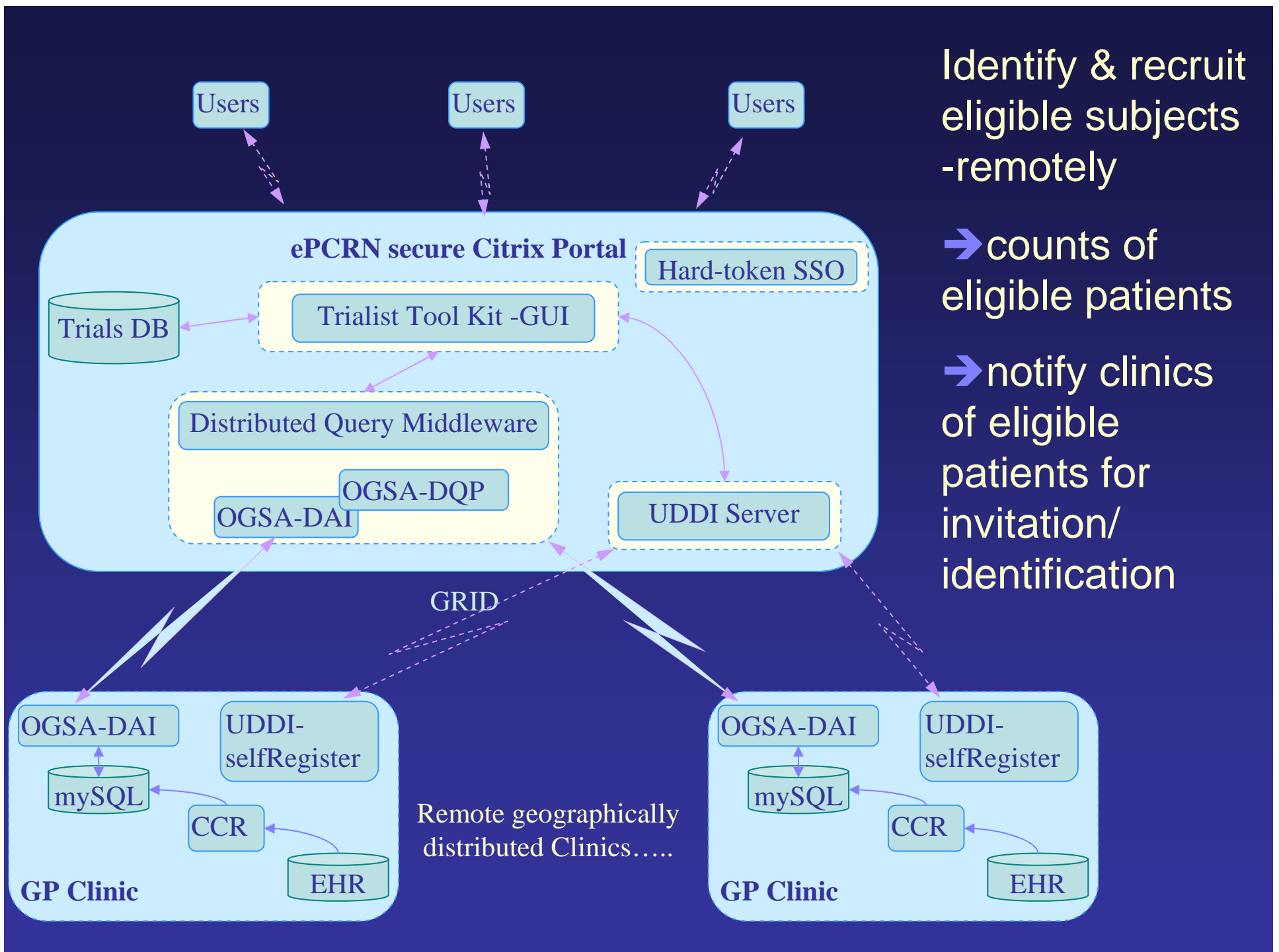
Portal and Security

(based on citrix)



IECRN demonstration

- ◆ June 1st 2006
- ◆ Major meeting of 'Roadmap' networks in Washington
- ◆ Demonstration of 'find an eligible patient' functionality



UK projects

◆ Phase 1

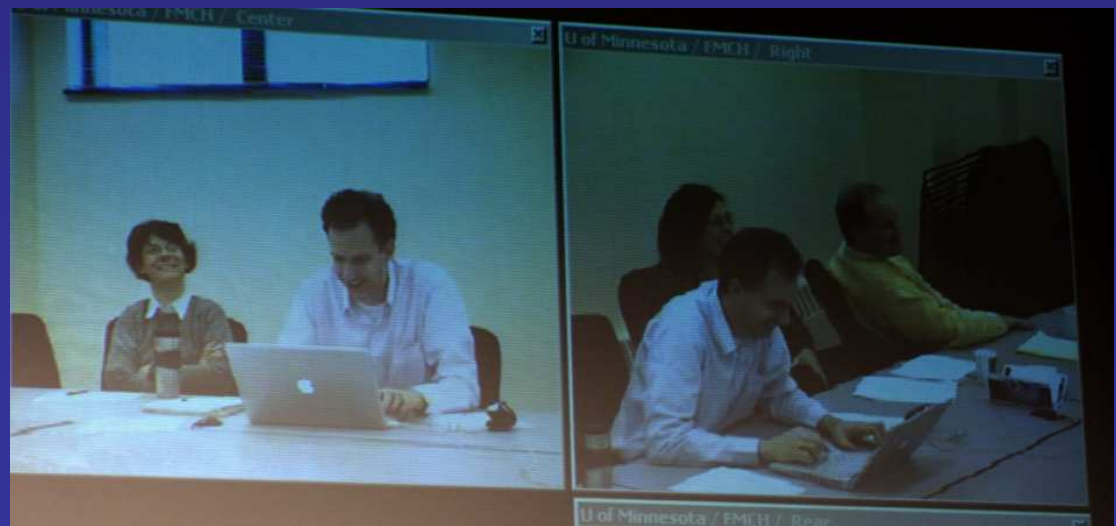
- Citrix site allows secure access to centralised RCT database via VPN tunnel
- Maratech and AGN for IP video conferencing
- Website for open access data collection and surveys

Access Grid

- ◆ Communication



- ◆ Collaboration

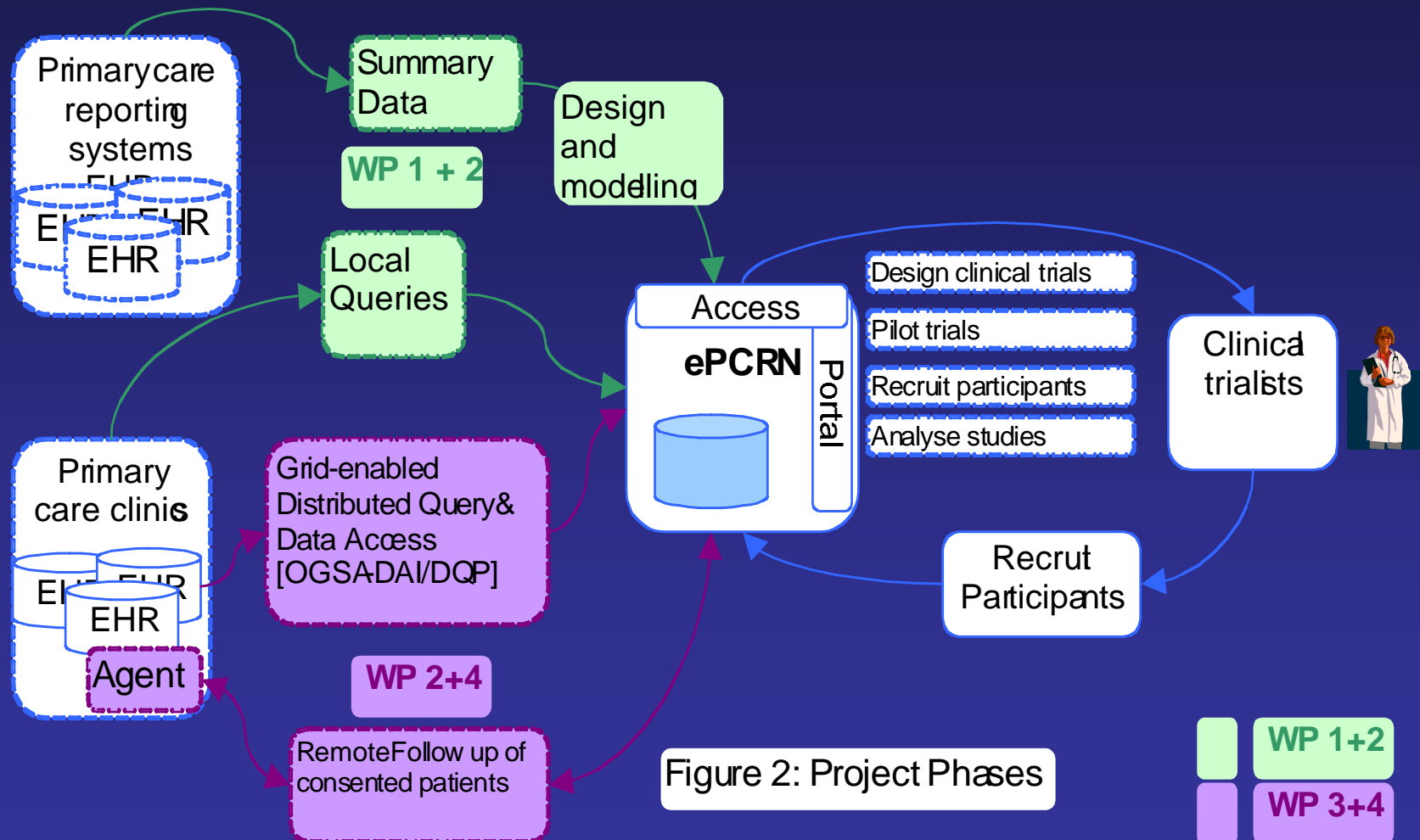


NHS links and future plans

Phase 2

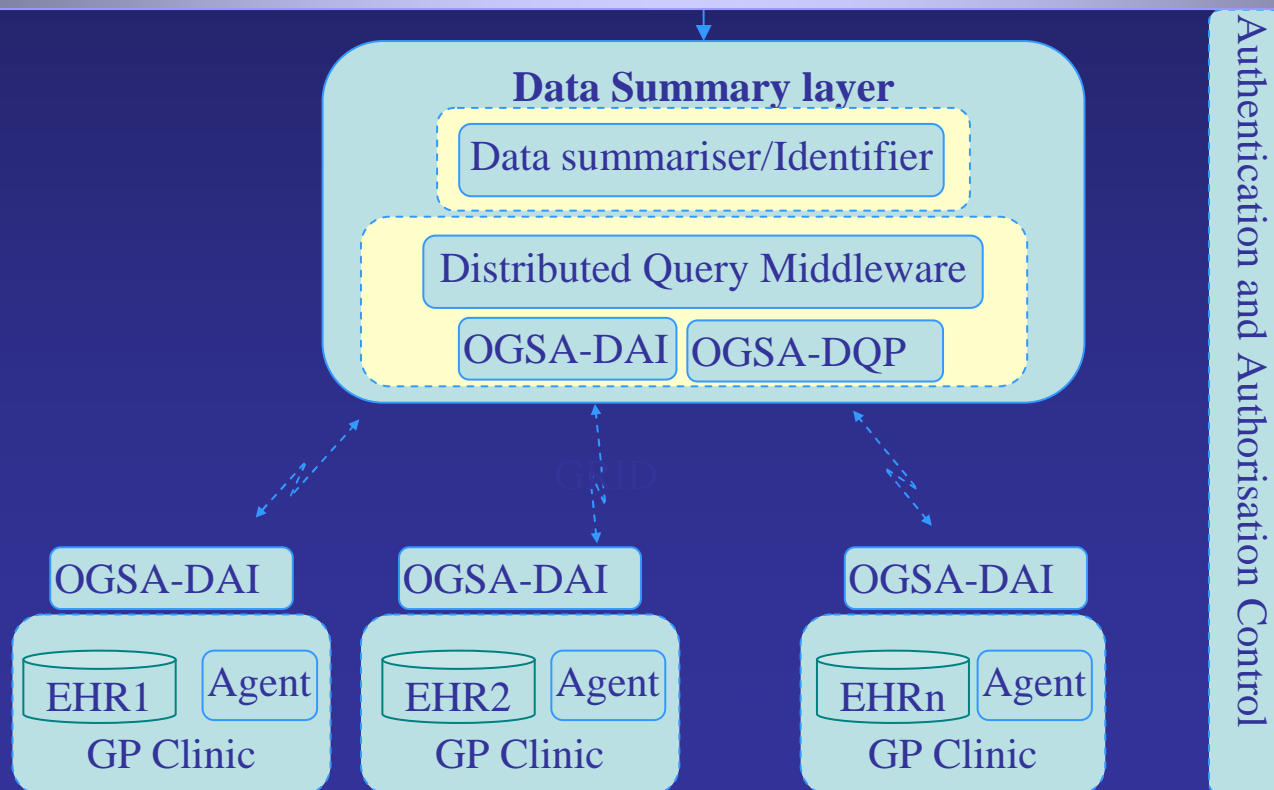
- Develop OGSA-DAI based DQP system for UK EHRs
 - For anonymised identification of potential RCT subjects
 - For data collection where subject has consented
- ➔ Application under consideration-S MRC

Clinical trial system



System architecture

Funded by the NIH



Thank you for your attention

QUESTIONS?