

# Knowledge for healthcare: Resource Discovery

NHS-HE Forum  
November 18th 2015

Richard Osborn  
London Strategic Lead for Library  
Services and eLearning

# Knowledge for healthcare



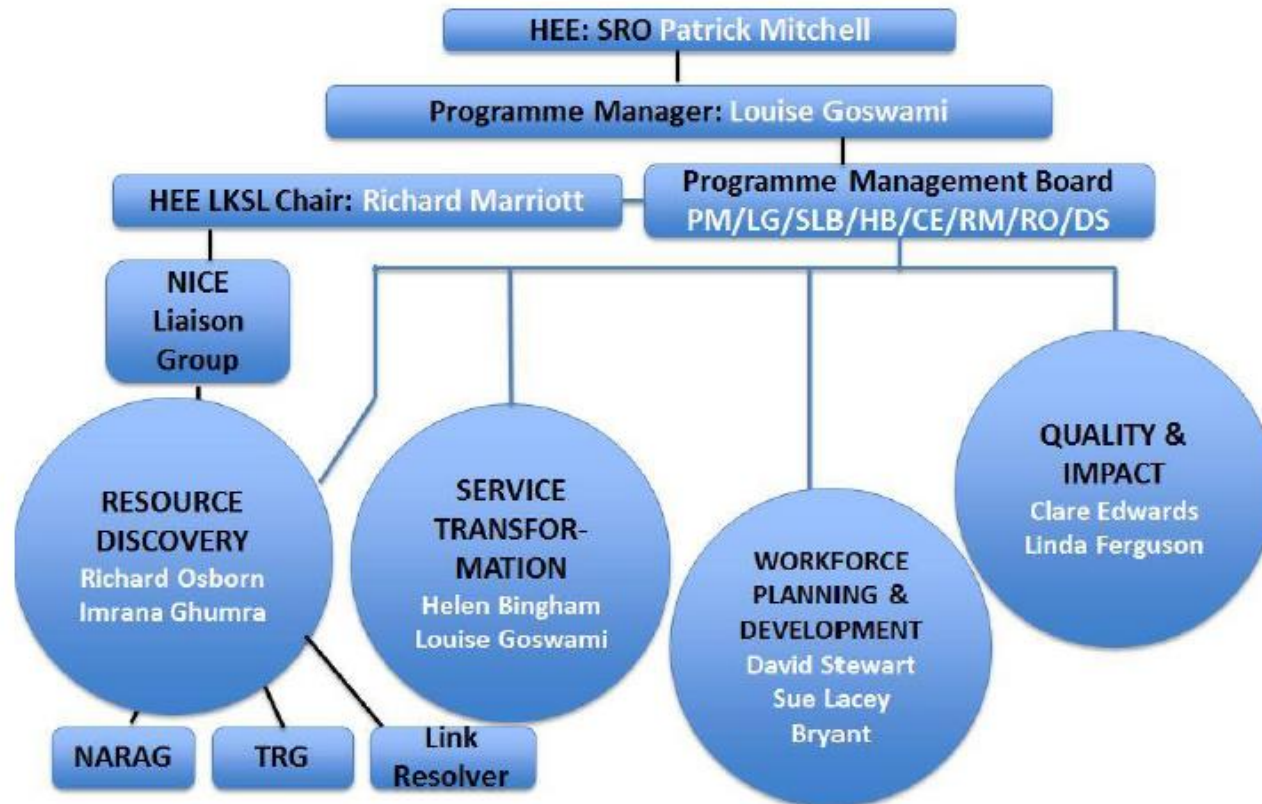
Full framework and a short briefing are available at:

<http://hee.nhs.uk/work-programmes/library-and-knowledge-services/>

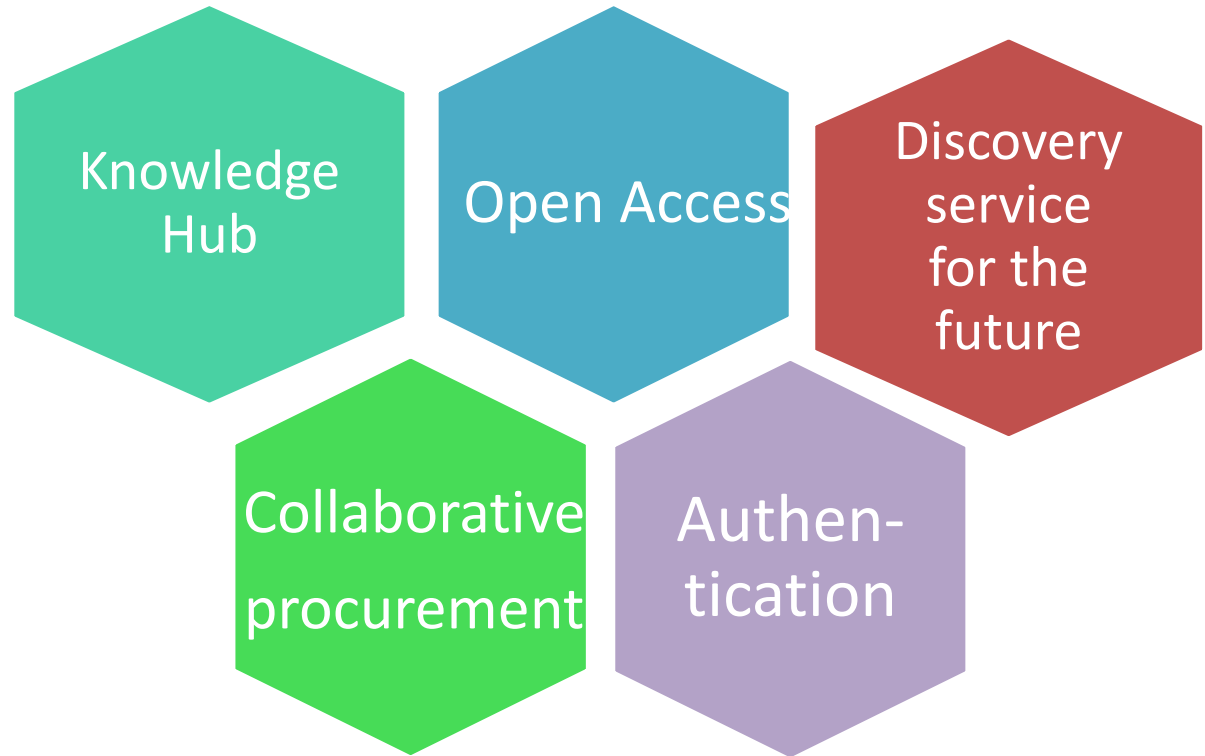
## Our vision

NHS bodies, their staff, learners, patients and the public use the right knowledge and evidence, at the right time, in the right place, enabling high quality decision-making, learning, research and innovation to achieve excellent healthcare and health improvement

# Governance Structure



# Resource Discovery



## Discovery service for the future

- Explore existing landscape of resource discovery tools
- Audit resource discovery tools already purchased by NHS organisations
- Consider discovery tools alongside our existing search interface (HDAS) and link resolver
- Make recommendations for wider discovery service provision across the NHS in England

## Knowledge Hub

- Define Knowledge Hub and its scope
- Liaise with HEE colleagues responsible for the development of other Hubs, e.g. TEL Hub, Research & Innovation Hub
- Scope landscape of NHS Hubs across UK
- Consult and engage with LKS community and other key stakeholders
- Develop draft specification for a Knowledge Hub for wide consultation

## Open access publishing & repositories

- Ensure existing open access material is easily discoverable via Link Resolver
- Explore with NHS organisations and key stakeholders their existing engagement with this area of work
- Scope good practice in open access publishing and repositories
- Look into feasibility of a repository for NHS in England
- Develop draft HEE guidance on open access
- Maintain links to Finch project steering group



# Collaborative procurement

- Compile national picture of resources purchased at every level across the NHS in England
- Explore potential for increased collaborative procurement nationally, across geographies, or as flexible consortia across LETB boundaries

## Authentication

- Scope existing authentication methods within and outside NHS
- Compile comprehensive picture of IP addresses across the NHS in England
- Gain greater understanding of embedded links process and HSCIC Spine Compliance
- Make recommendations on how authentication should be improved, to realise ambition of seamless access

## What is our goal ?

To achieve **quick and easy access to the widest possible range of resources** – for staff, learners, patients and the public

# Any Questions ?

**Richard Osborn**

HEE LKSL Lead on Resource  
Discovery and NICE Liaison

[richard.osborn@ncel.hee.nhs.uk](mailto:richard.osborn@ncel.hee.nhs.uk)

020 7863 1682