

Jane Williams

Martin van Eker

Ensuring equality of access



Summary

- Context: the need
- What we did
- Does it work?
- Challenges and the future

Clinical Academies

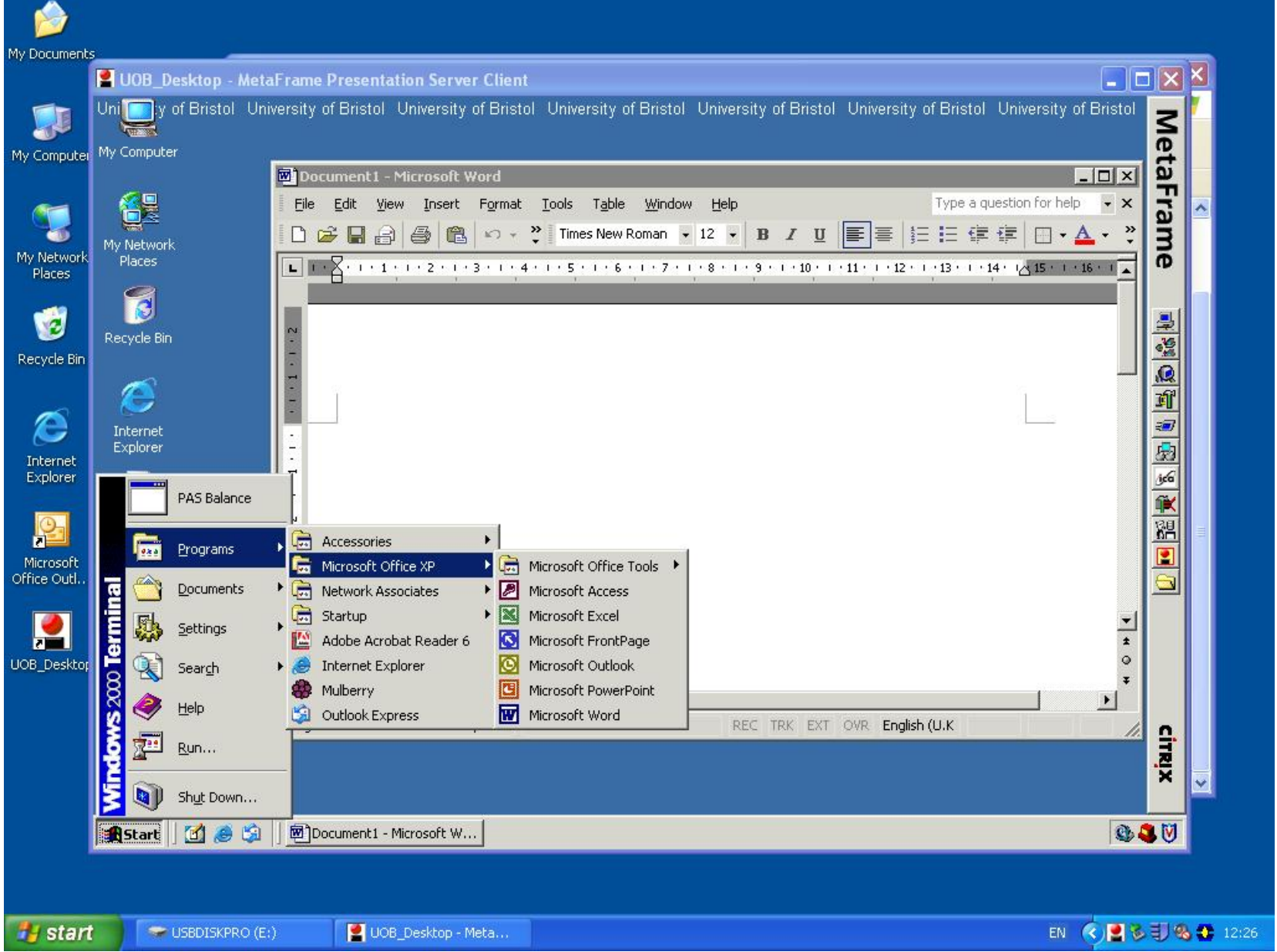
- 50% increase in student numbers
- New Peninsula Medical School
- NHS-based Academies (7 spanning 11 sites + AWP)
- Not just clinical experience
 - Students spend six months in a single academy receiving all their teaching, clinical skills, assessment, pastoral care, quality management
- Reconfigure the Medical School: new partnership in the design and delivery of Medical Education

Role of IT and eLearning

- Single curriculum, many sites
- Each unit has the potential to be taught up to 28 times each year:
 - Students sit same final examination
 - Equality of access to learning materials and resources
- Principle driver: to help provide a consistent student learning experience across the clinical academies
 - Student desk-top
- UWE
- NHS ‘Learning together, working together’

Guiding Principles

- Equality of access to information and resources (university desk-top)
 - Meet licence requirements (eg e-journals, software)
- Satisfy network security of both universities and NHS
- Sustainable and manageable support
- Flexibility to incorporate future requirements (eg video streaming, video conferencing)
- Single PC on desks with access to both university and NHS resources
- Academy PCs to accommodate any user irrespective of institution or organisation



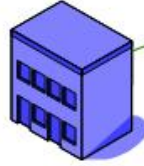
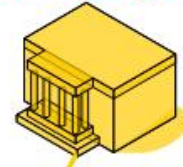
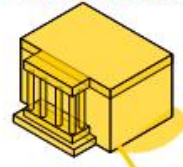
How did we provide access?

- Some of the logistical challenges were...
 - Sites spread over a wide geographical area
 - 8 Trusts with many different people to work with
 - Initial workshop
 - Access to universities – initially University of Bristol and University of the West of England
 - Wider academy vision for all NHS and HE learners
 - Who will support this model?

University of Bristol

University of the West of England

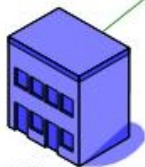
South West of England Regional Network



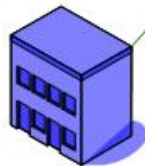
Gloucester



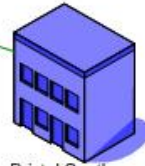
Yeovil



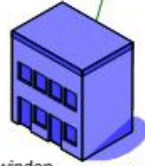
Avon and Wiltshire Partnership (Mental Health)



Cheltenham



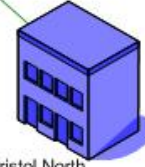
Bristol South



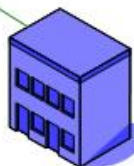
Swindon



Bath



Bristol North

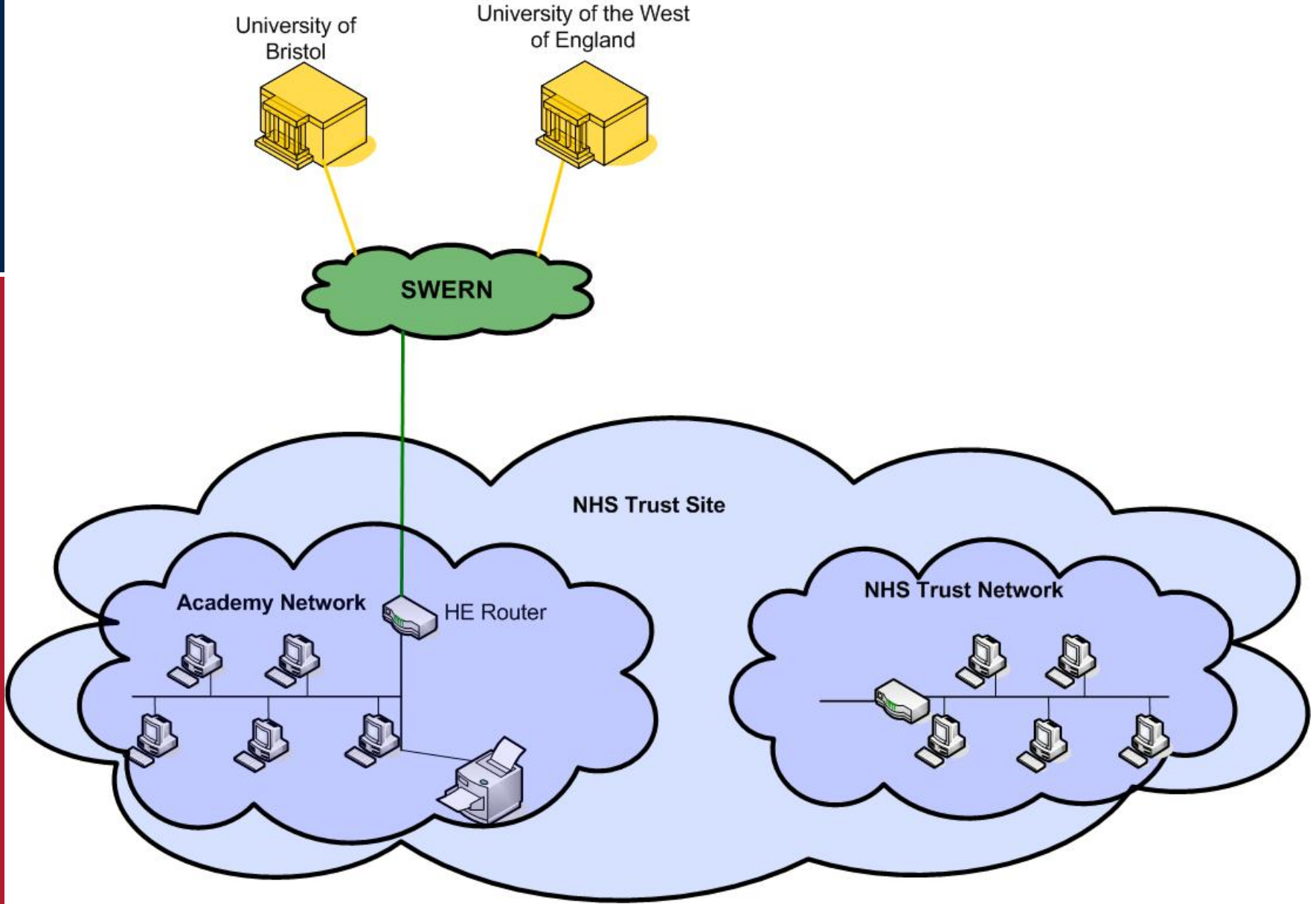


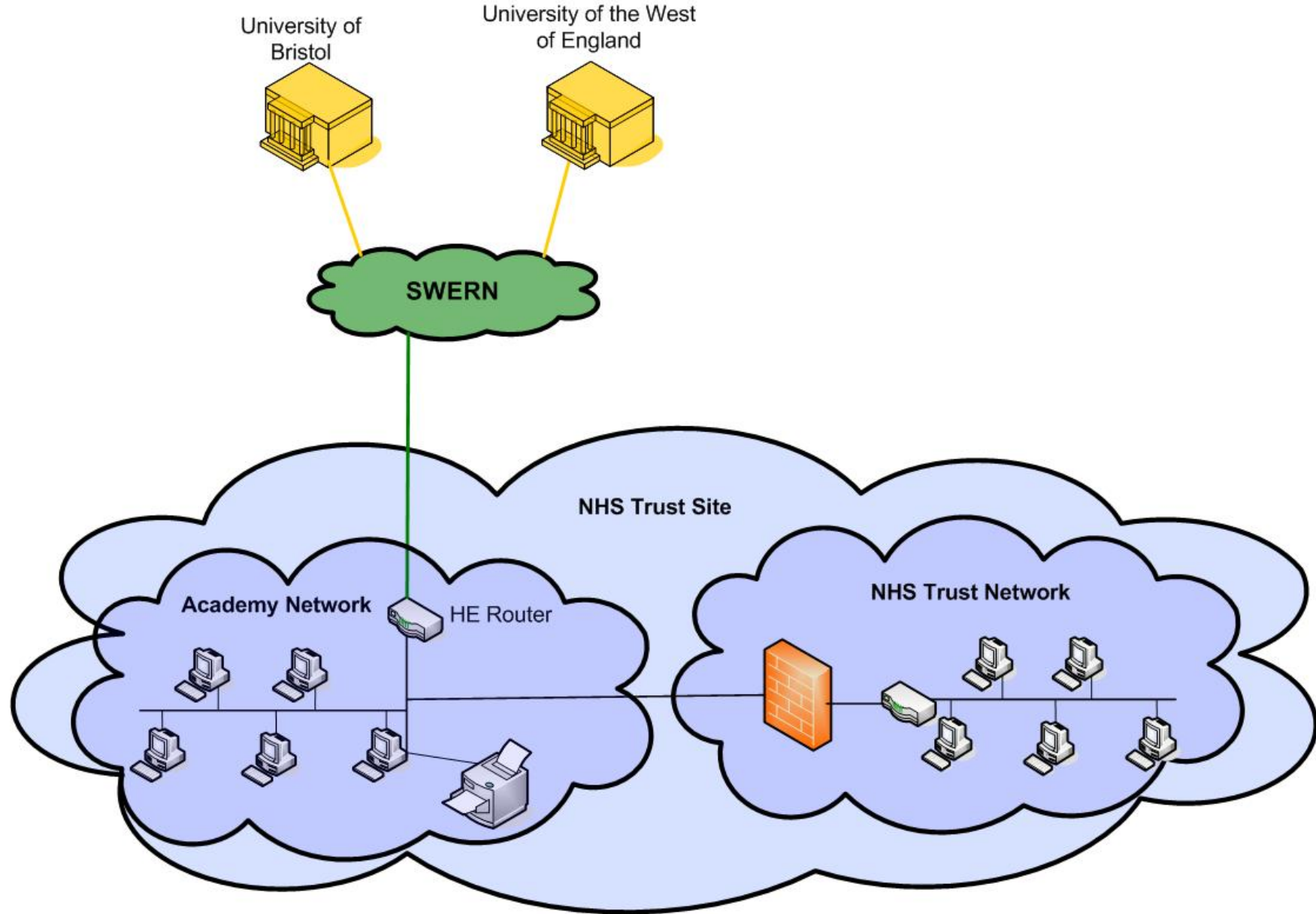
Taunton

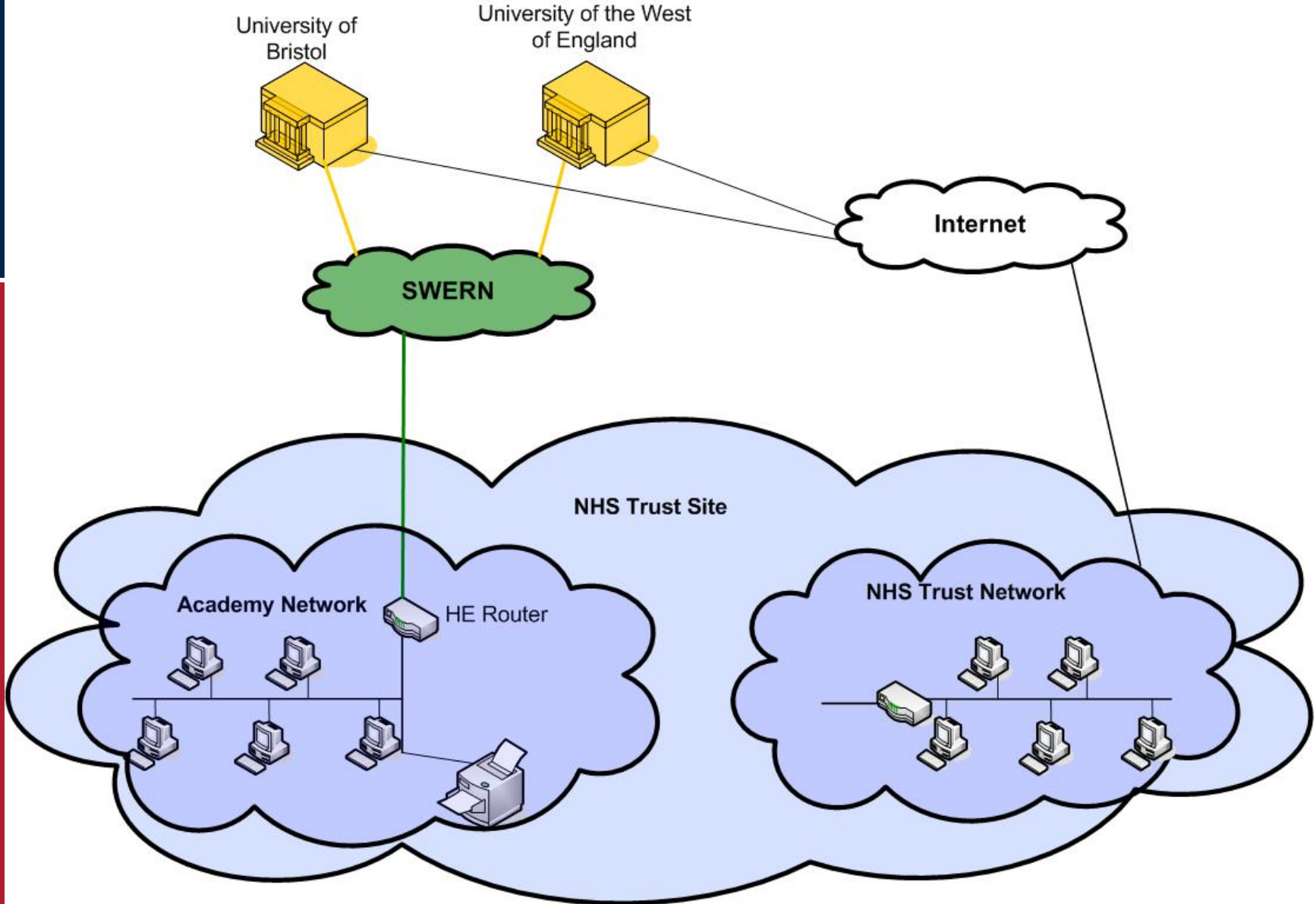
NHS Trusts Teaching
Hospitals 2Mb/s – 10 Mb/s
Dedicated links

Academy Network









Variations

Problems

- Printing needs firewall permissions to come back into the NHS site
- Cost: high cost of the private circuits
 - Other alternatives
- Ongoing support for the Academy PCs as funding is swallowed up by the trust
- Video over Citrix is difficult

Does it work?

- IT access no longer a problem:
 - There is a new problem!
- Student survey
 - Minor issues
- Have we achieved our guiding principles??
 - Yes but ever changing needs and environments

Key points

- Project manager
- Flexibility of local plans
- Communication and partnerships
 - NHS IT staff are not ours to tell what to do!
 - Our issues are not their priority
- Ongoing support
 - Development/implementation and maintenance are different
 - Divergence
- Never finished