

The Matthew Hay Project

Dr Brian Robertson

Head of Infrastructure
Management



Matthew Hay

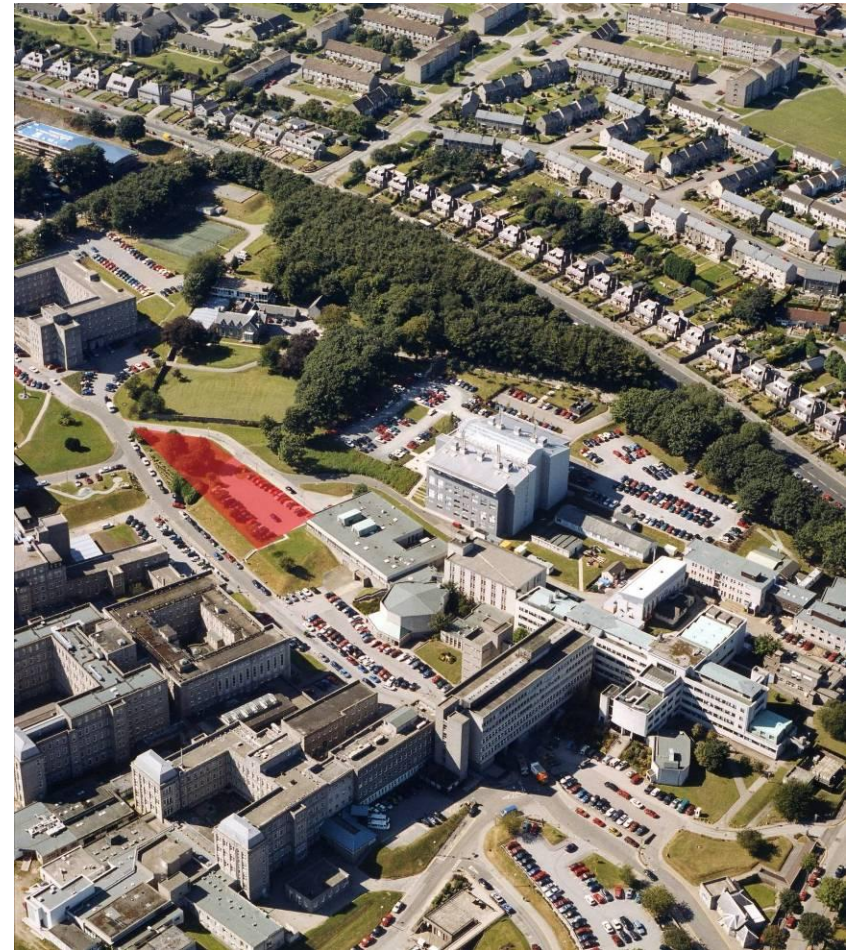
- Professor of Forensic Medicine & Chief Medical Health Officer for Aberdeen
- Vision – single site for public health services and medical school
- Identified Foresterhill site (1900)
 - Building commenced 1926



14 Professor Matthew Hay, in his role as MOH, assailed by the furies of typhoid, measles, influenza, whooping cough and scarlet fever. *Bon Accord*, 12 December 1891, p 16.

Foresterhill Campus

- One of the largest health campuses in Europe
- Strong educational and research presence
 - Large Medical School
 - Institute of Medical Science
- Urgent need for a facility for ongoing training for all members of the clinical team



The Concept

- Integration of teaching of anatomy with development of clinical skills and knowledge of disease by medical students
- Enhancement of inter-professional teaching and learning
- Create a teaching and learning focus to deliver undergraduate medical education and postgraduate training of doctors and other health care professionals in Grampian.

The Building

- State of the art medical teaching and learning centre
- £16.5M purpose built facility
- 5,300 sq m



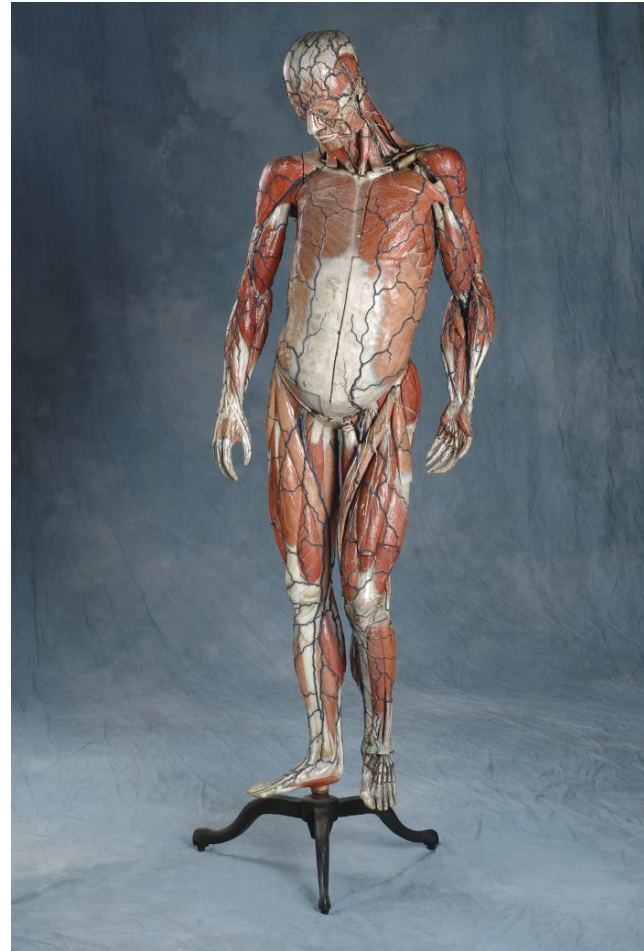
The Building

- Joint University of Aberdeen and NHS Grampian project
- Operated by University of Aberdeen
- Programme
 - Construction start May 2007
 - In operation September 2008



Functionality

- Anatomy teaching space and resource centre
 - Handling of cadavers
 - Legislative restrictions
 - ‘licensed premises area’
 - 3D visualisation



Functionality

- Clinical skills
 - Simulated ward area
 - Facilities for the dedicated group of volunteer “patients”
 - Specialist accommodation for innovative simulators for training, including the UK’s first “sim-baby”



Functionality

- 220-seat lecture theatre
- IT suites running training applications
- Specialist training
 - Resuscitation
 - Violence & Aggression



Functionality

- Modern teaching, learning and discussion facilities including break-out spaces, a café and social spaces which will encourage discussion and inter-professional working



Functionality

- Museum area presenting the history of medicine in the North-east and its contribution to the world



User Groups

- University of Aberdeen students and staff
- NHS Grampian clinical and non-clinical staff
- NHS Education Scotland tutors and Foundation Year doctors
- The Robert Gordon University students and staff
- Members of the General Public?

Communications Requirements

- Video within Matthew Hay
- Video between Matthew Hay and Aberdeen Royal Infirmary
- Videoconferencing
- Telemedicine
- University of Aberdeen Student Portal and on-line applications
- Robert Gordon University Portal and on-line applications
- NHS Training Resources
- NHS Grampian Intranet
- Radiological data
- Clinical data
- Internet

IT Partnership

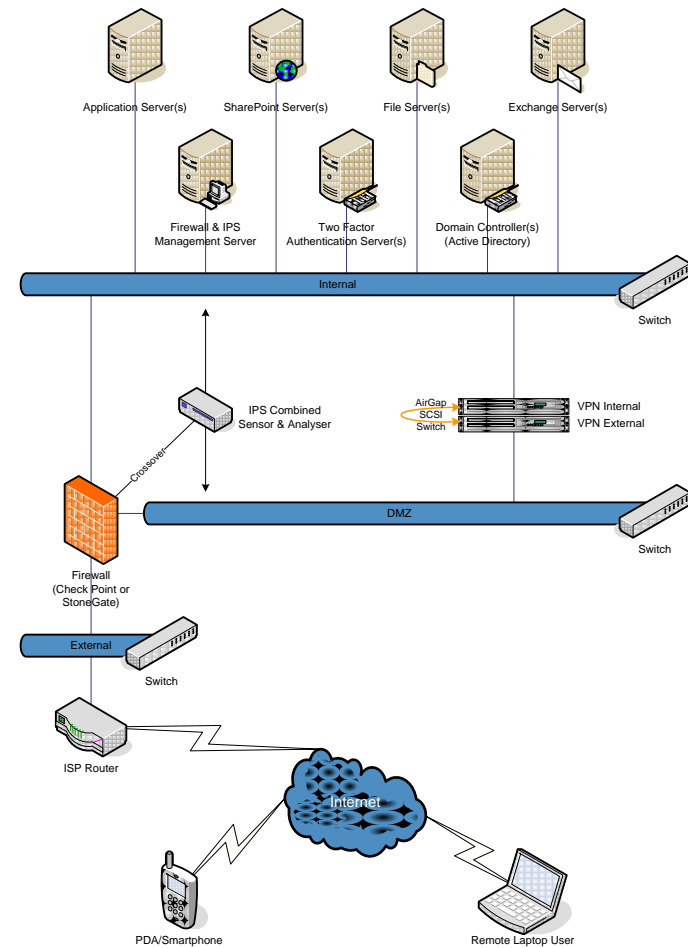
- Long established relationship between University of Aberdeen and NHS Grampian IT services
- History of sharing resources
- Constrained by
 - Security policy
 - Funding and resources

Current Connectivity

- Access to UoA resources
 - University staff in NHS premises
 - Dedicated fibre links
 - Source address routing
 - NHS staff with UoA role
 - Firewall with Network Address Translation
- Access to NHS resources
 - UoA staff with NHS role
 - Separate PC
 - Access to NHS resources restricted to NHS PCs

Connectivity Solutions

- National solution
 - NHS/HE gateway
- Local solution
 - SSL VPN
 - IPSec



Other Challenges

- Shared desktop
 - Authentication
 - Shibboleth?
 - Common applications
 - Software licensing
- Physical Security
 - Staff ID card swipe
 - Card compatibility
 - Consolidation and management of database

