

# Collaborative eLearning Enablers and the ScotGEM Challenge

**Natalie Lafferty**

University of Dundee

NHS-HE Forum Scotland – 27 October 2016





# BARRIERS TO TEL STILL EXIST





# TEL Programme



**Health Education England**

## **Barriers to Access for Technology Enhanced Learning (TEL)**

**Lead Author: Naisla Lafferty – University of Dundee**

**With support and contributions from:**

**Catherine Ebenezer – University of Sheffield**

**Mark Hellaby – North West Simulation Education Network Manager, Health Education North West**

**Richard Price – Yorkshire Ambulance Service/Health Education England**

**Malcolm Teague – Jisc**

**Susan Kennedy – Health Education England**

**NHS HEE/NEA TEL Enablers Group**

**Version 2.0 March 2016**

A blurred background of a computer workstation. In the foreground, a hand is visible holding a black computer mouse. Below the mouse, a black keyboard is partially visible. The background shows a computer monitor and other desk items, all out of focus. A semi-transparent dark grey horizontal band is overlaid across the middle of the image, containing the main text.

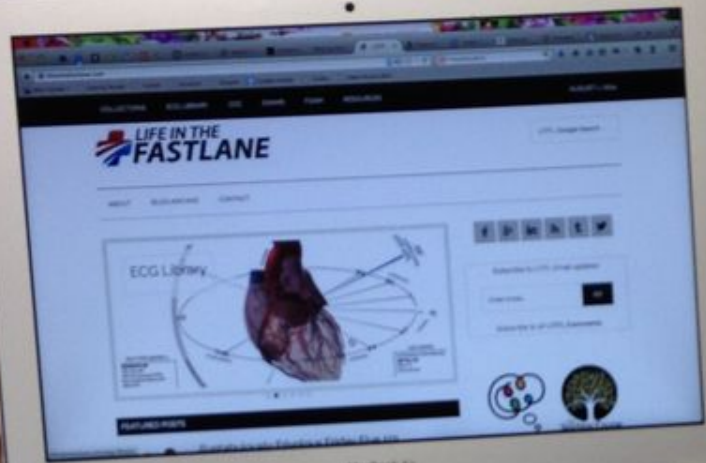
# DIGITAL COMPETENCY

Willingness to use technology



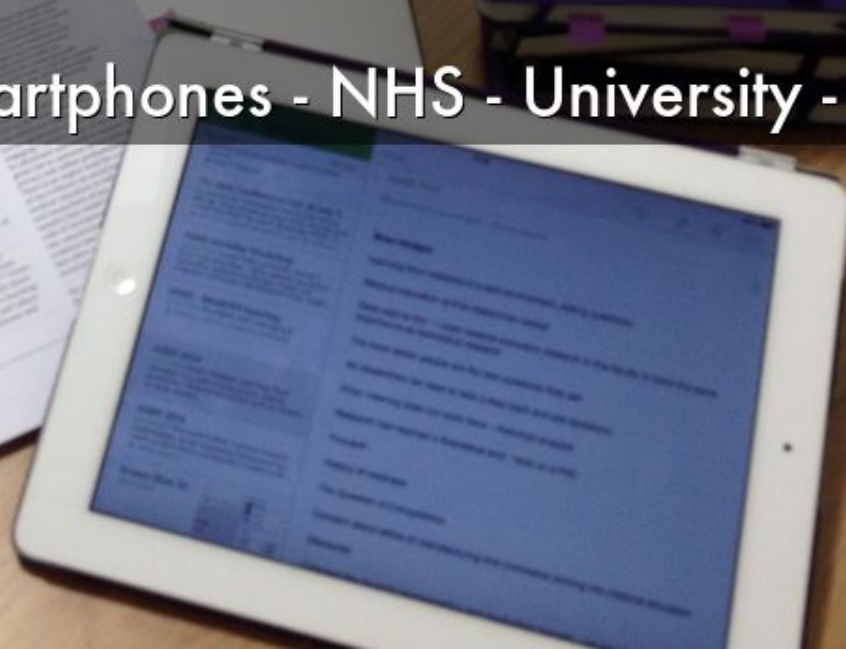
# TIME

Allocate dedicated time



# VARIETY OF DEVICES

PCs - Macs - Tablets - Smartphones - NHS - University - BYOD





# LEGACY CONTENT

Flash content inaccessible on mobile devices



# HIGH SPEED NETWORKS

Bandwidth issues restricting video streaming etc





WI-FI  
AREA

**NO ACCESS TO WIFI OR 3G**

Hampers use of BYOD for just-in-time learning

Please leave ALL  
KNOWLEDGE AND  
SOCIAL NETWORKS  
OUTSIDE the  
firewall.



# SOCIAL MEDIA

Access frequently denied due to perceived risks



## Personal Learning Networks. Final version

from **iriss** PLUS 3 months ago / NOT YET RATED

Jointly produced by IRISS and NHS Education for Scotland, this video animation explains how Kristina, a mental health practitioner, learning how to use social media to create a personal learning network.

NHS Education Scotland encouraging use of social Media to support evidence moving into practice

The background of the slide is a dark, textured surface with a grid pattern. Overlaid on this are three main elements: a globe on the left side, a compass rose on the right side, and a magnifying glass in the center. The globe shows continents in green and blue. The compass has a blue face with white markings and a red needle. The magnifying glass is silver and its lens is positioned over the text.

# WEB BROWSERS

Access to a modern browser that supports HTML5

A photograph of a computer desktop with various application icons and a semi-transparent dark banner overlaid with text. The desktop background is a light blue sky with clouds. The icons include: Logitech QuickCam, Paint Shop Pro 7, Acrobat Reader 5.0, Microsoft PowerPoint, Ad-Aware SE Personal, Microsoft Publisher, Photoshop 7.0, D-Link, QuickTime Player, Window Explorer, FinePixViewer, QuarkPress for Windows, Chanel, How to use FinePixViewer, PowerDesk, Sacha, and HP Internet Connect...

# SOFTWARE & HARDWARE

PDF Readers - Video & Audio Cards



# BREAKING THE BARRIERS

Recommendations to address each barrier





# PHYSICAL SPACES

Designed & equipped to support learning



**#WeNurses - Thursday 21st July 2016 8pm (GMT Standard Time)**

**How can technology help us to learn? - HEE TEL**

[Tweet](#)

If you haven't joined in a tweet chat before **it's very simple.**

[Here's a guide](#)

[Details](#)

[Contributors](#)

[Word Cloud](#)

[#EBP](#)

[Summary](#)

[Comments](#)

[Transcript](#)



## **i** Chat Details **f**

Hosted by WeNurses using #WeNurses

*This chat is guest hosted by @NHS\_HealthEdEng*

As our personal and working lives rely more and more on technology it seems only fitting that technology is enhancing high quality healthcare learning and training.

[The Kings Fund \(2016\)](#) identify eight technologies that will change healthcare in the next decade:



# THE CHALLENGE

Yesterday's cutting edge is today's dustbin

John Seely Brown



# PREPARING FOR THE FUTURE

Building in agility





# PROGRESS IN SCOTLAND

Mostly at local level



**SIGNIFICANT PROGRESS**

govroam



# VIDEO STREAMING

## NHS Tayside



# FEDERATED ACCESS

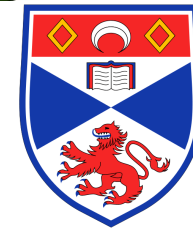
## NHS Tayside – University of Dundee



# ScotGEM CHALLENGE

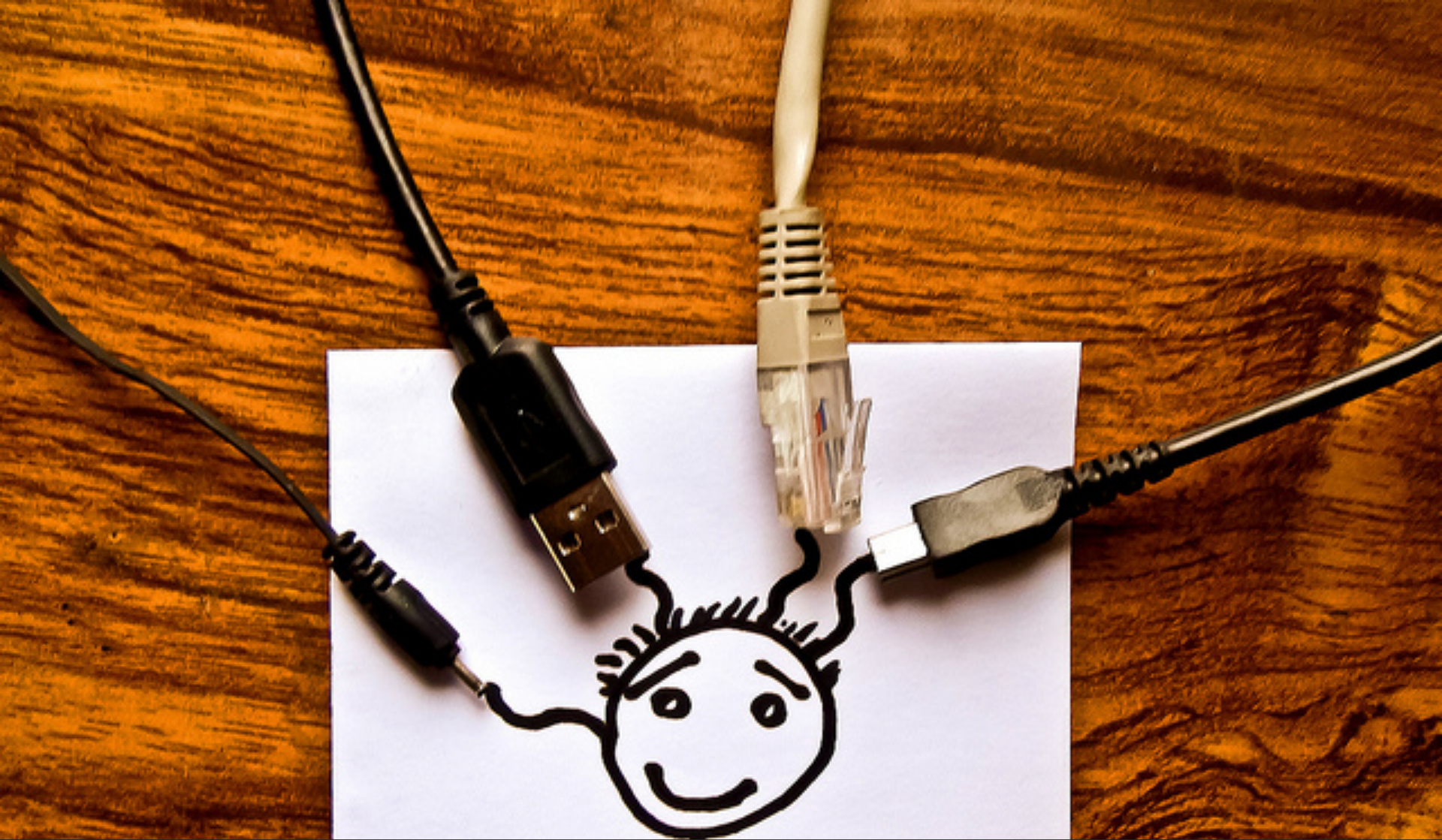


**NHS**  
SCOTLAND



UNIVERSITY OF  
  
DUNDEE

4 Year Graduate entry MBChB



Can we develop a national approach to federated access?



Natalie Lafferty – University of Dundee  
Twitter - @nlafferty  
Email - n.t.lafferty@dundee.ac.uk