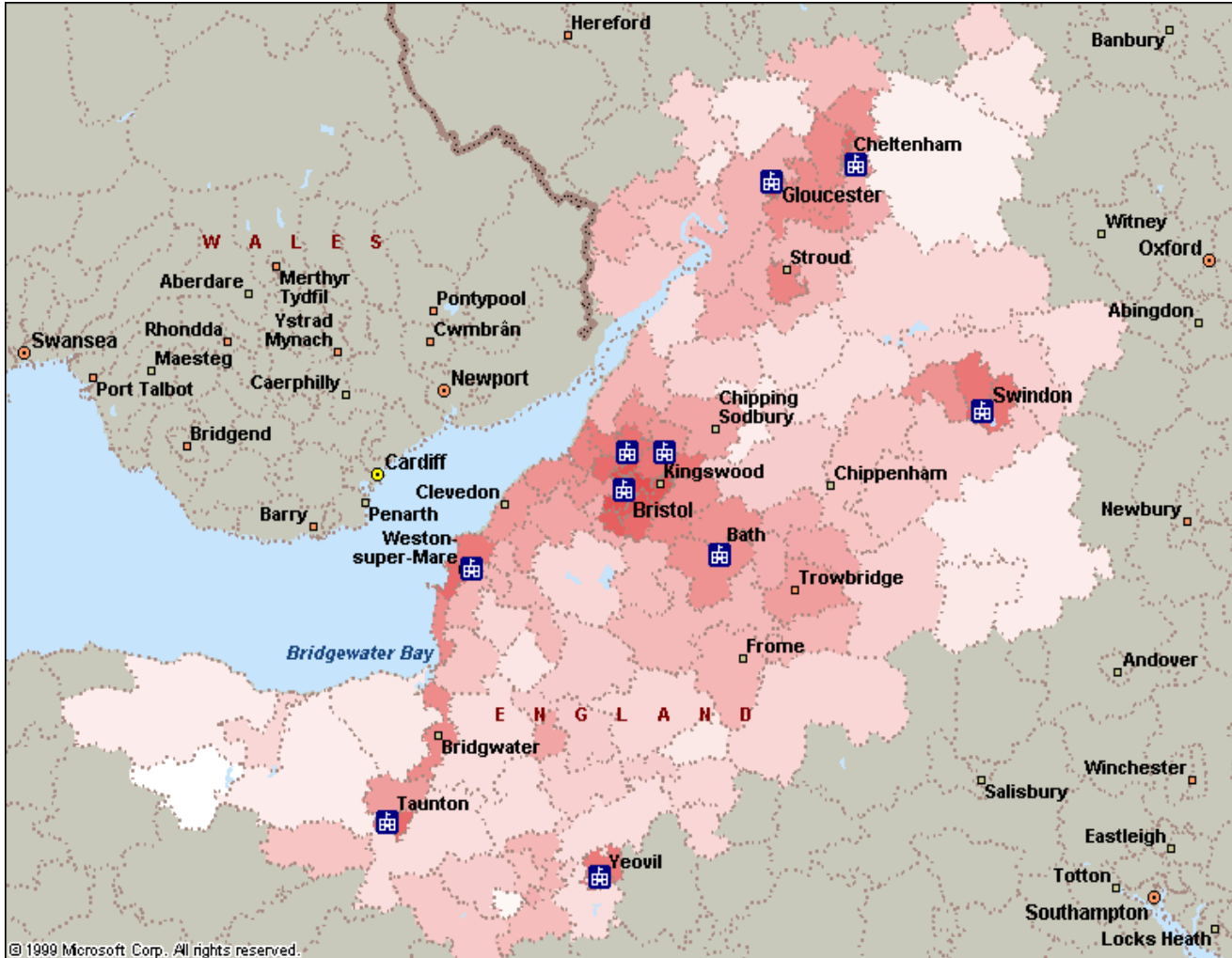




eduroam over WiFi at Weston General Hospital





What is eduroam?



'eduroam (education roaming) is the secure, world-wide roaming access service developed for the international research and education community.

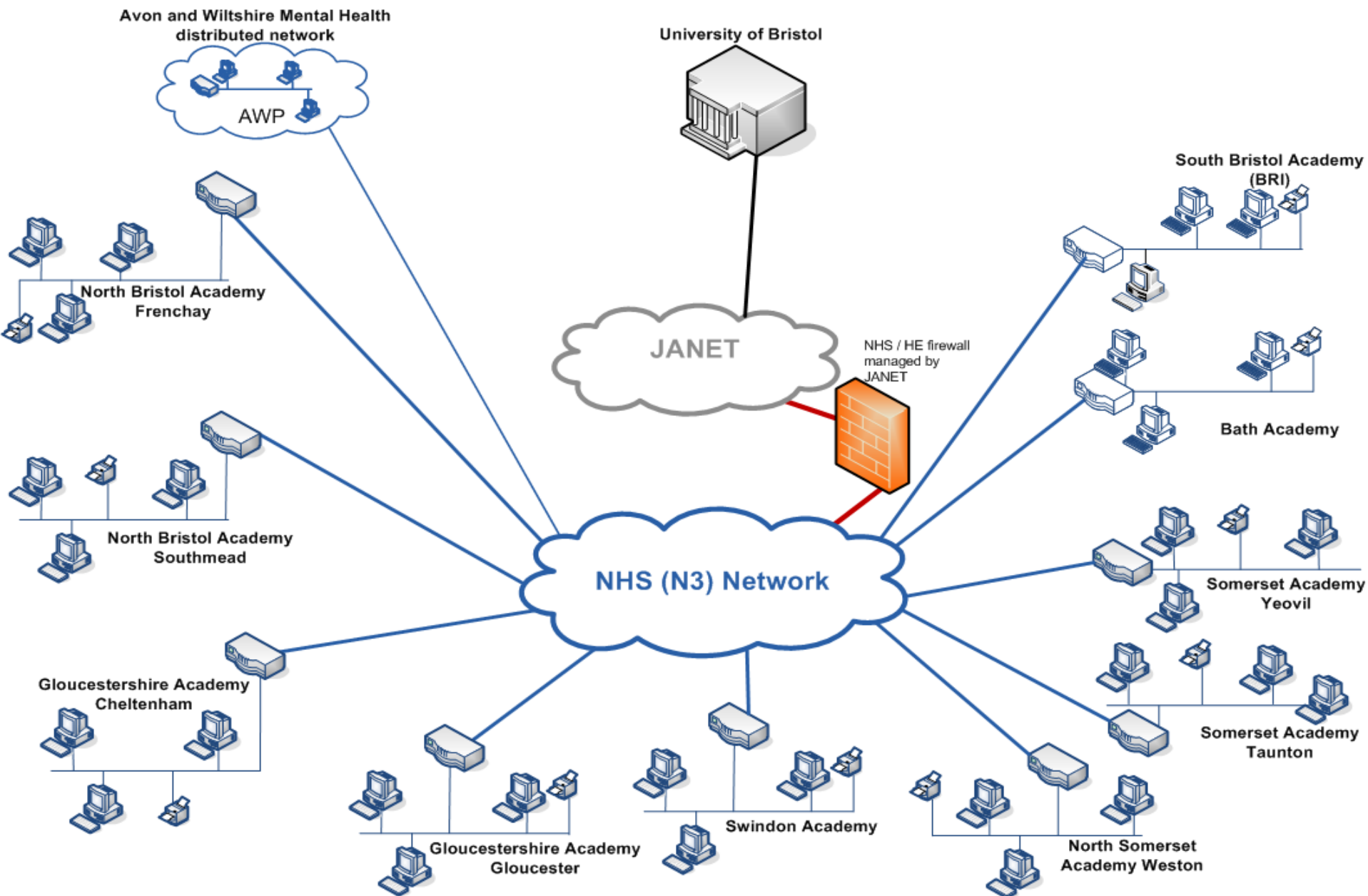
eduroam allows students, researchers and staff from participating institutions to obtain Internet connectivity across campus and when visiting other participating institutions by simply opening their laptop.'

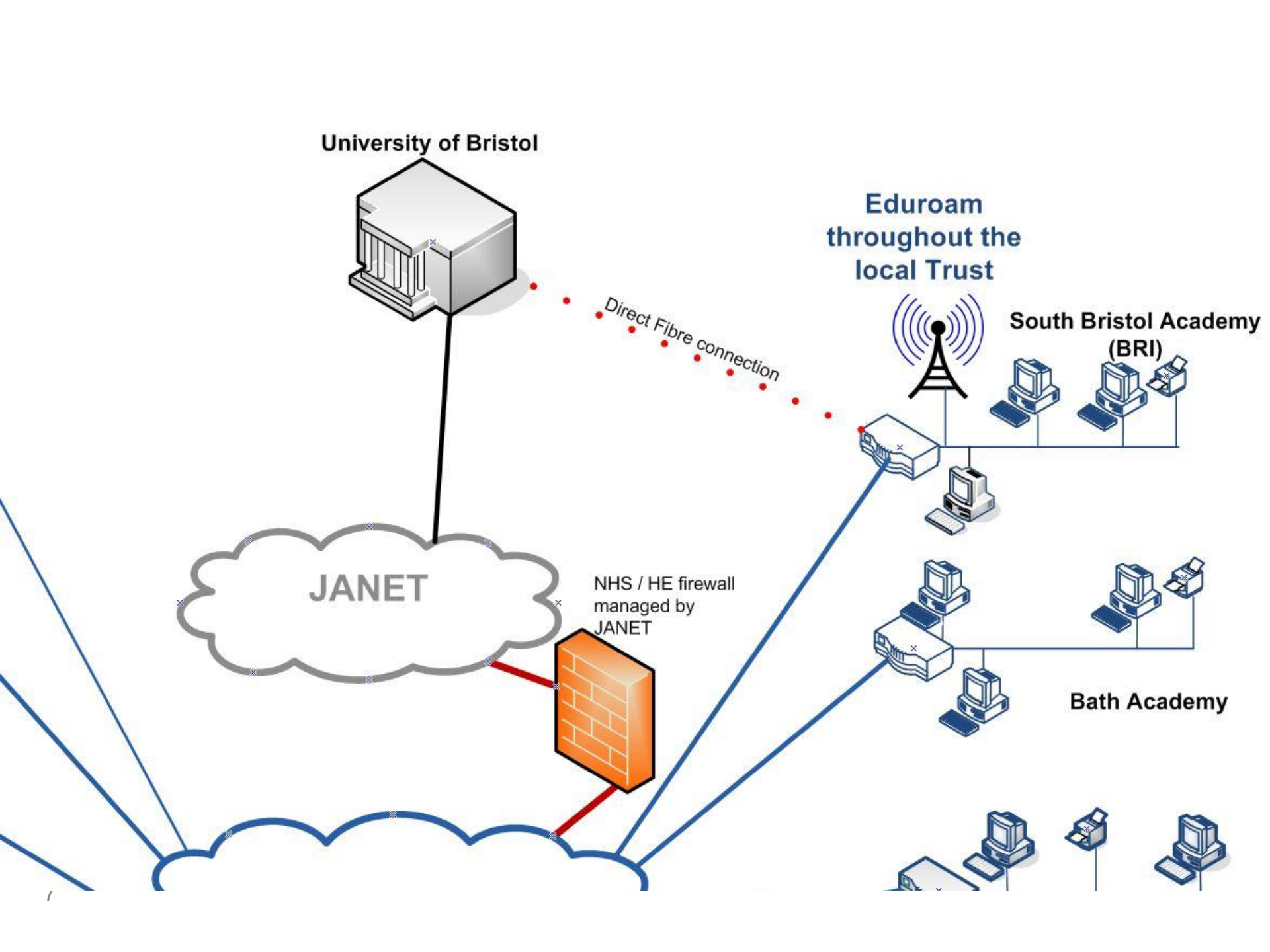
<https://www.eduroam.org/>

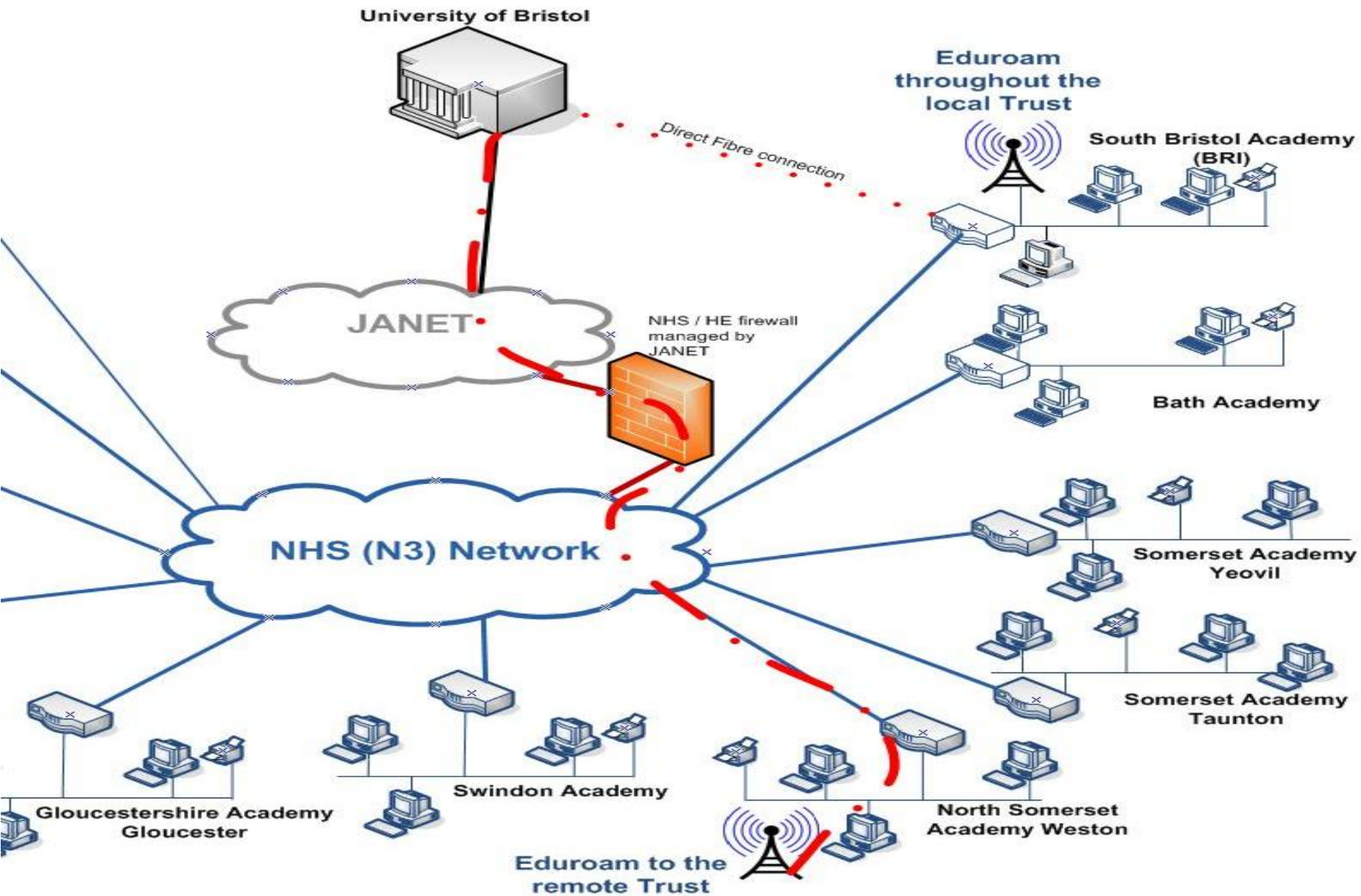
University's Technology Enhanced Learning (TEL) strategy

A major part of our work is implementing the University's TEL Strategy, using technology to:

- **Enhance convenience for students and staff**
 - Empower students and staff with enhanced learning environments and activities
 - Engage people, supporting the lifelong intellectual relationship between the University, our students, and the wider intellectual community
 - Enhance the reputation of the University as a centre of excellence
 - Deliver high-quality, reliable, efficient, integrated, intuitive, user experience focused solutions and support

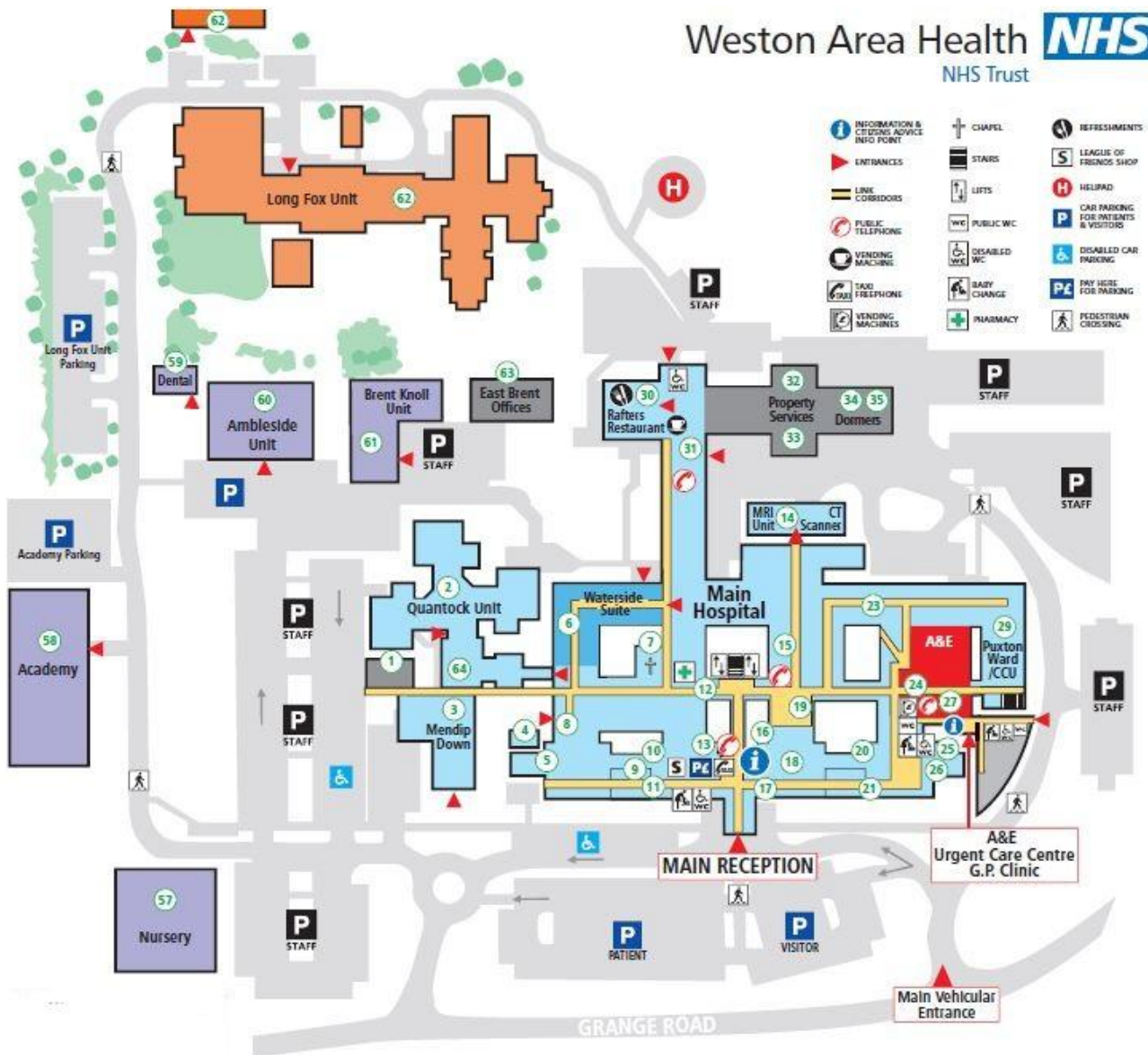








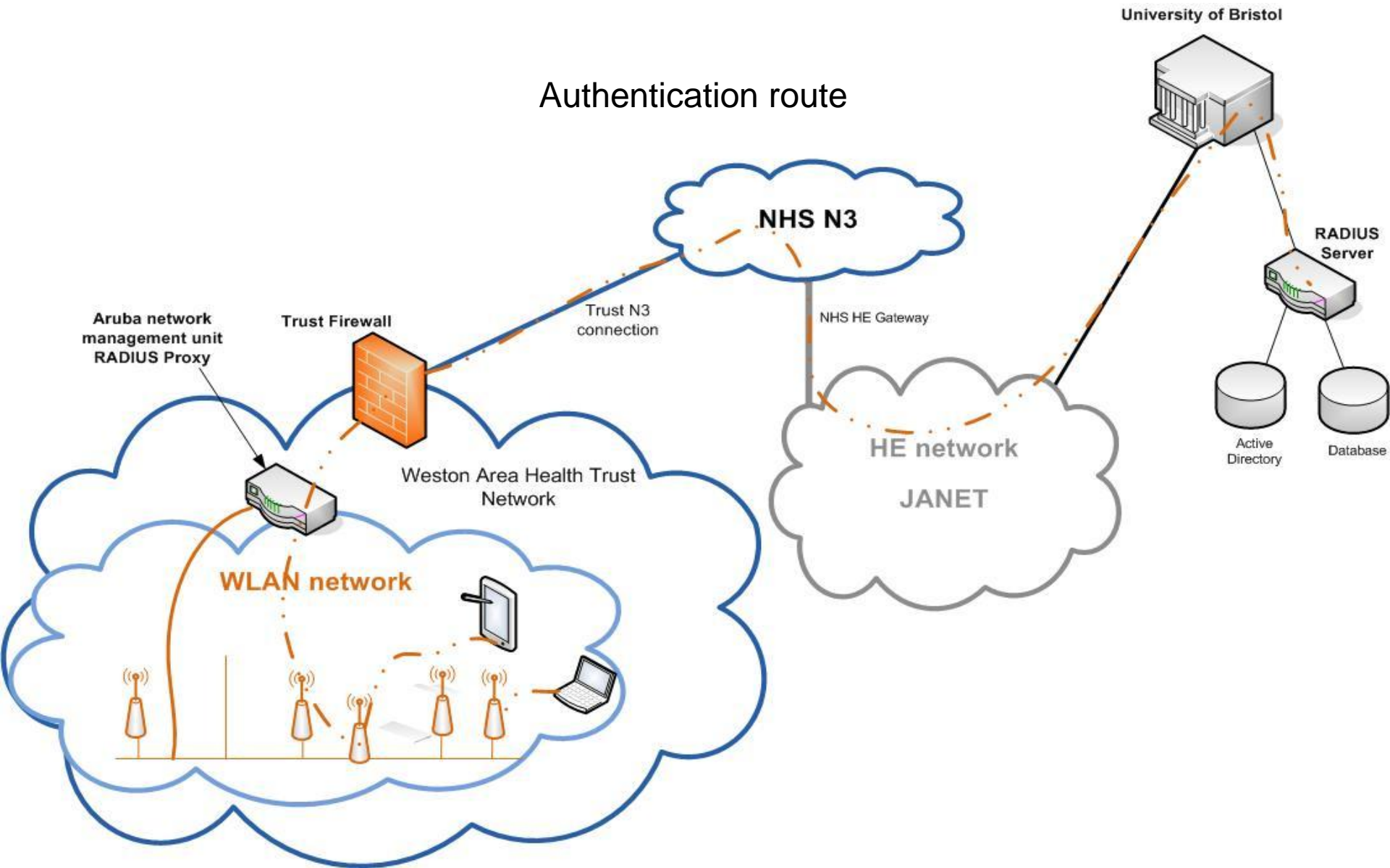
Weston Area Health NHS Trust

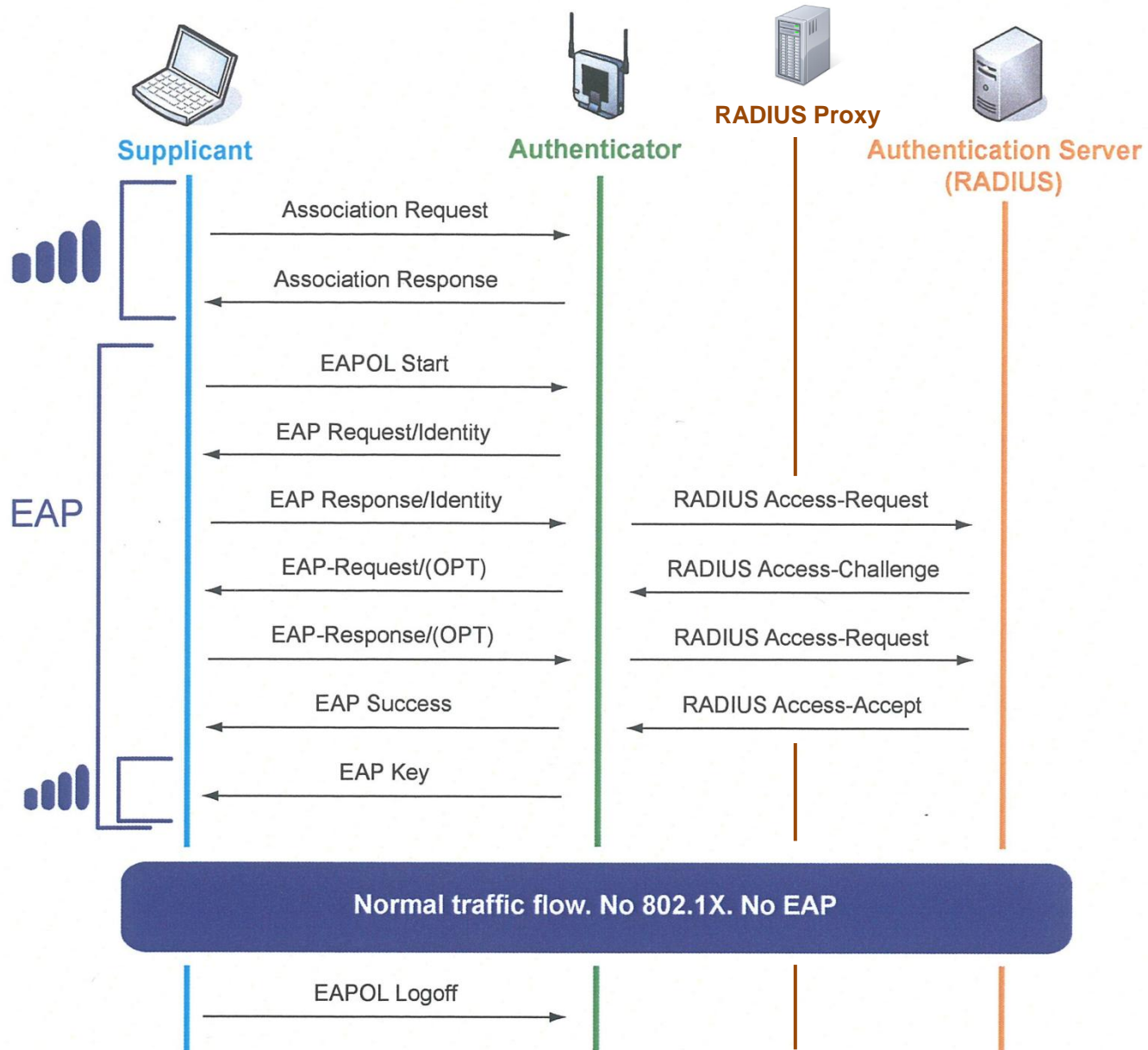


Pilot

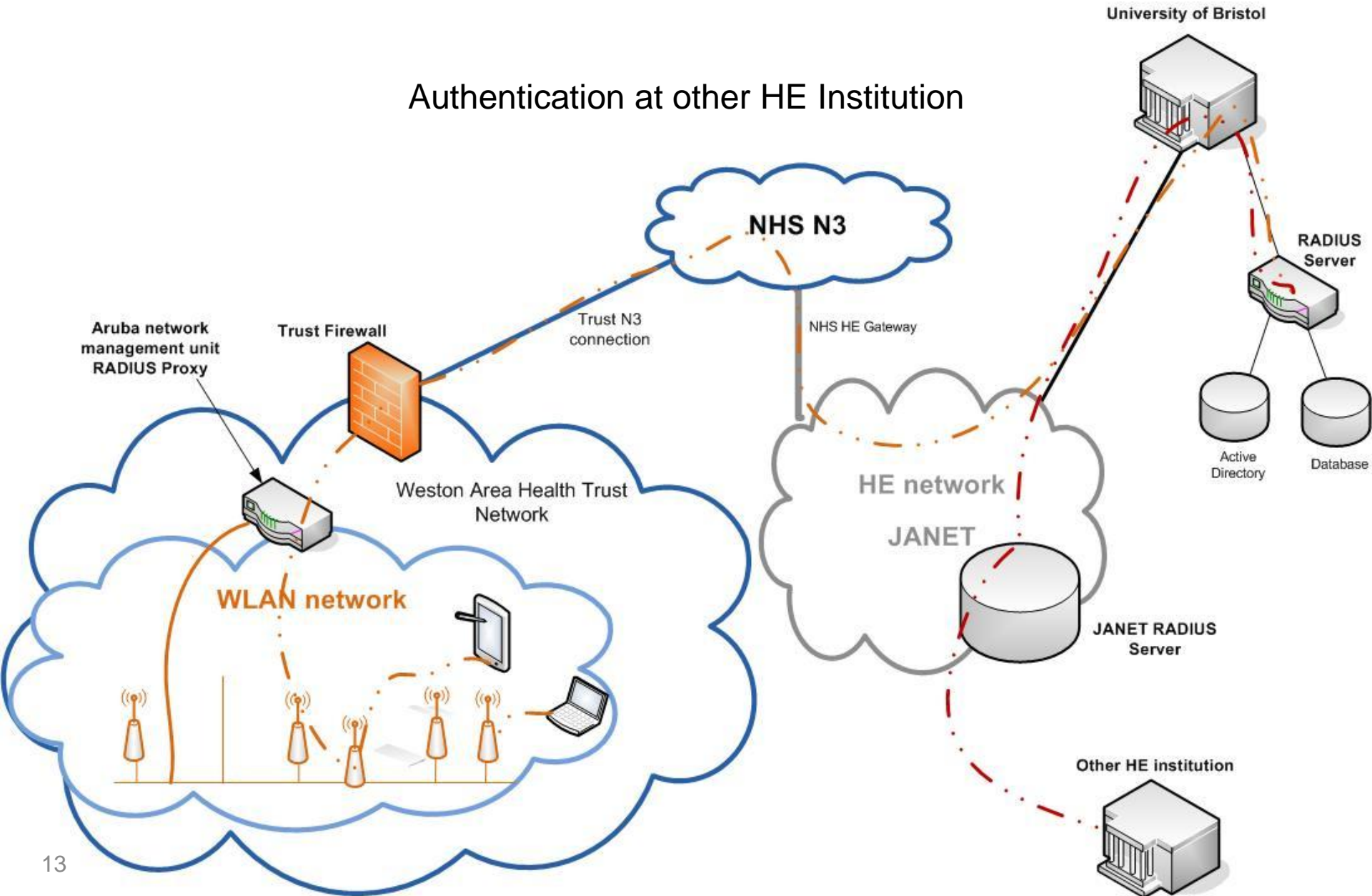
- Resource issues
- Technical requirements
- User guides and faulting procedure
- Sign up of interested parties
- Good working relationships

Authentication route

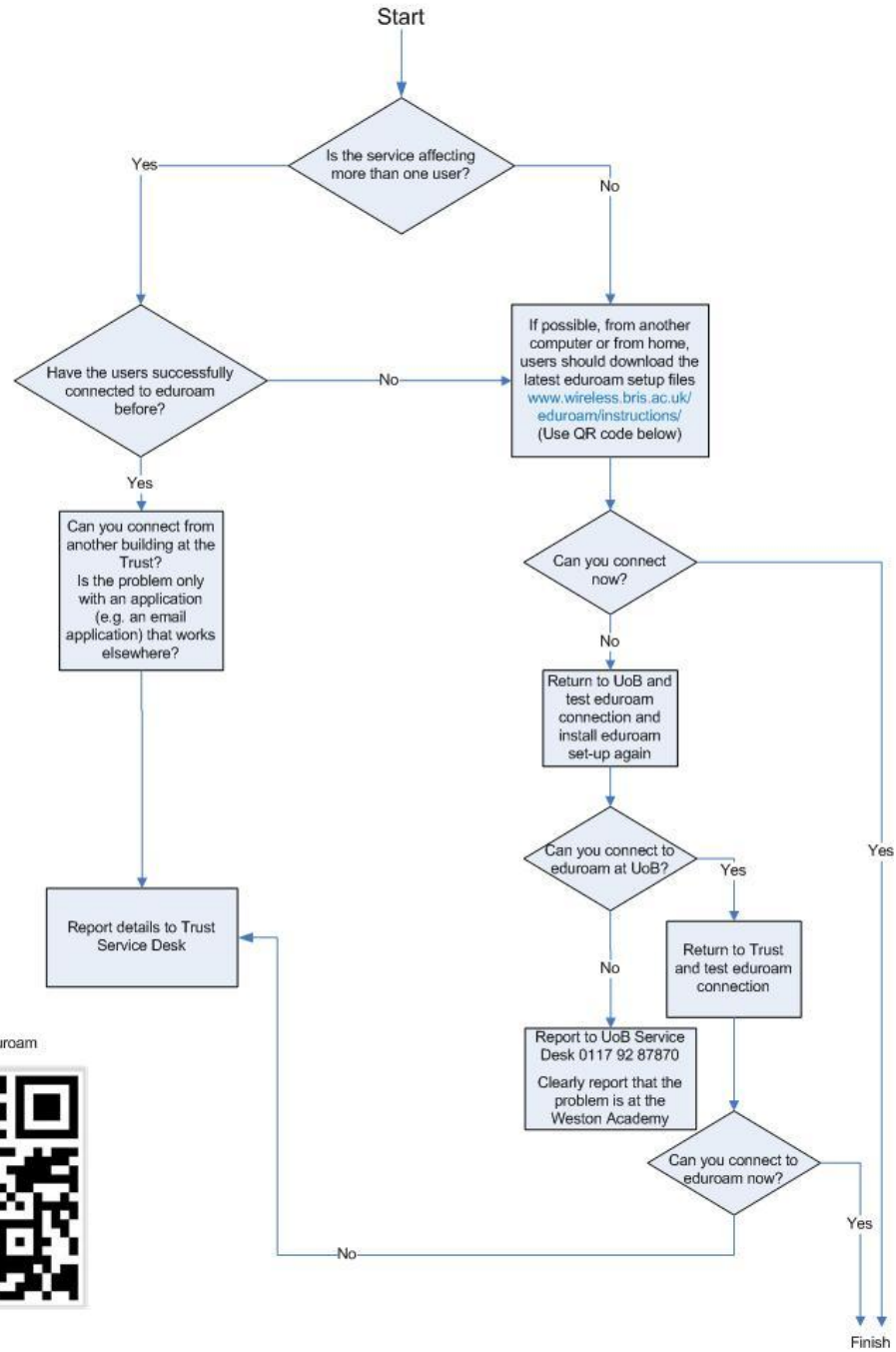




Authentication at other HE Institution



Academy & librarian staff eduroam Network Faulting Procedure



Link to UoB Eduroam





eduroam wireless zone

To get started and for help visit:
www.wireless.bris.ac.uk/eduroam



For instructions on how to connect.



IT SERVICES

Summary

- A unique development
- Convenience agenda
- Collaboration (needs to be thought through)
- To infinity and beyond

