



TEL Programme

Richard Price

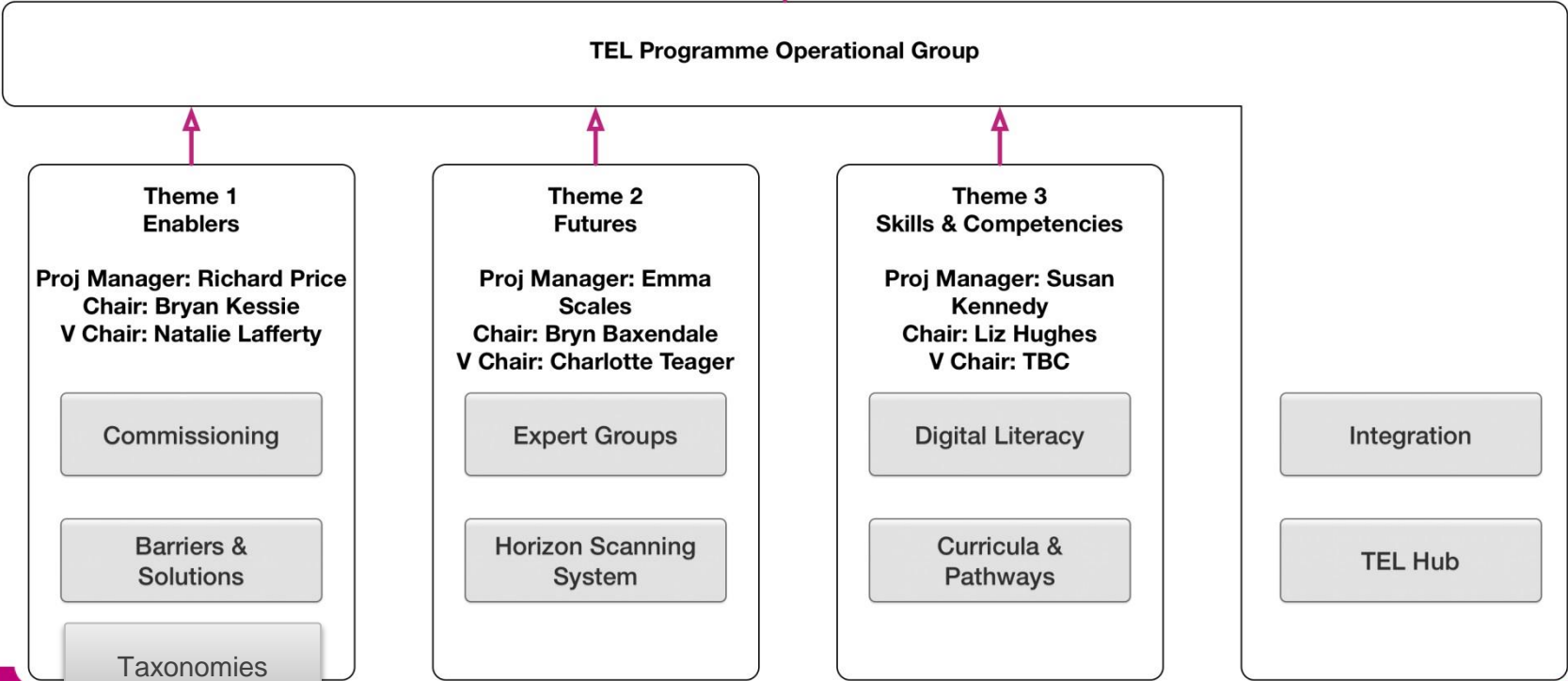
www.linkedin.com/in/richardpriceuk

@richardpriceuk



TEL Programme Governance structure

- Groups
- Projects
- Advisory Group
- Process



- Simulation Expert Group
- Expert Group (name TBC)
- Expert Group (name TBC)
- Horizon Scanning
- Library & Knowledge Services
- LETB e-Learning Leads

One Hub to Rule Them All?

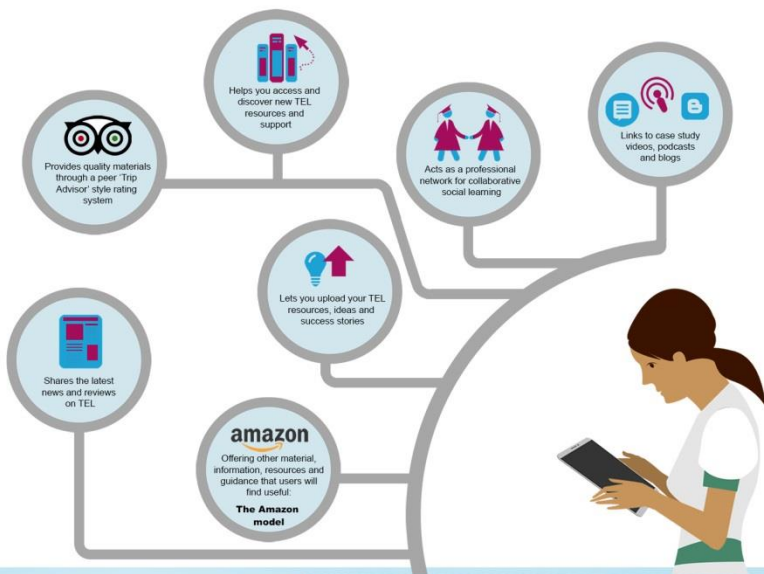
Health Education England



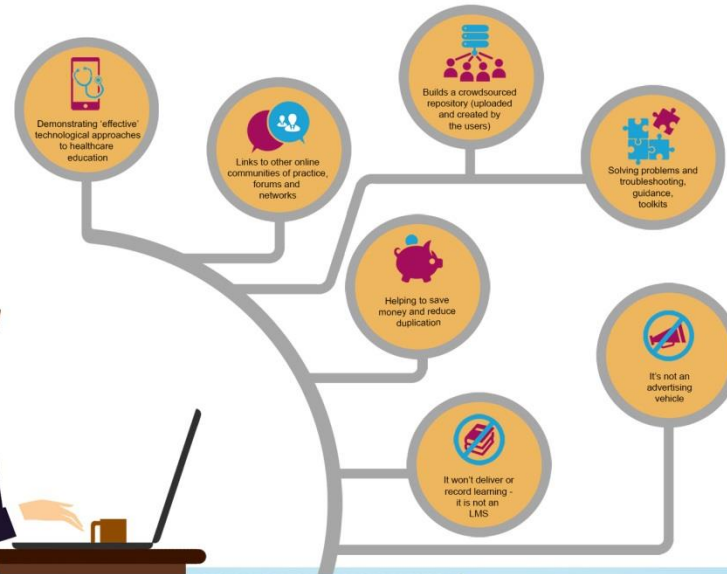
The Technology Enhanced Learning (TEL) Hub

The TEL hub is designed to enable technology to enhance learning across all of healthcare. It is designed to meet all your TEL needs and be your go-to place for all things TEL.

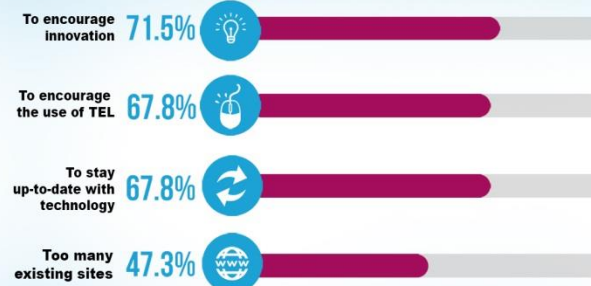
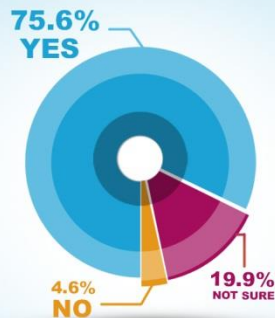
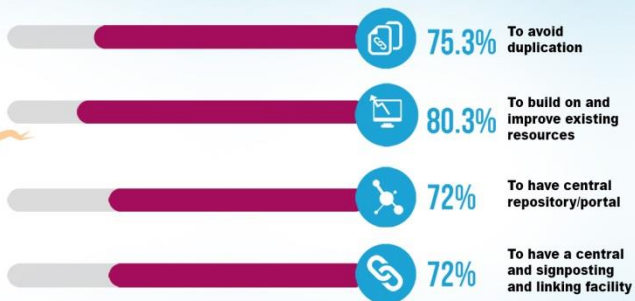
Features



Benefits

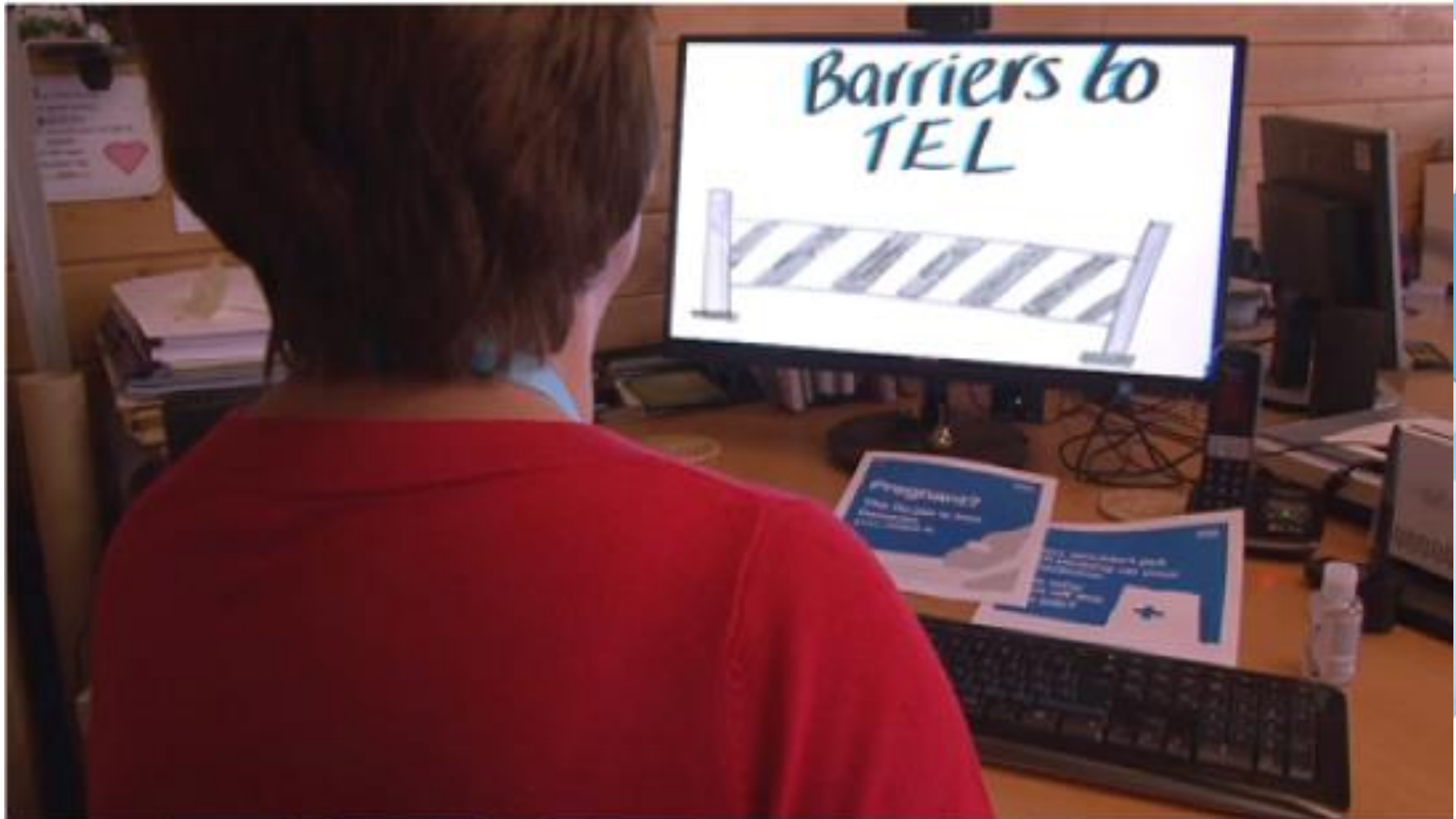


You told us YES you need the hub



TEL uses technology as part of the learning process. Both familiar and new technologies provide clear opportunities for innovation and to deliver a blended learning experience. TEL can offer better, quicker and more efficient learning - it's not about gadgets.

Barriers to TEL?



<https://www.youtube.com/watch?v=JIY8eYYVByA>

What the Heck is a Hack?



The Hack video will be available on [Lanson TV](#) in the next few weeks.

A Storify is available here (or you can scan the QR code):

<https://storify.com/adapeck/telhack-2015>

You can find out more about the TEL Hack here:

<http://telhack.co.uk/>





TEL Programme

Richard Price

www.linkedin.com/in/richardpriceuk

@richardpriceuk

