

Hi everyone,

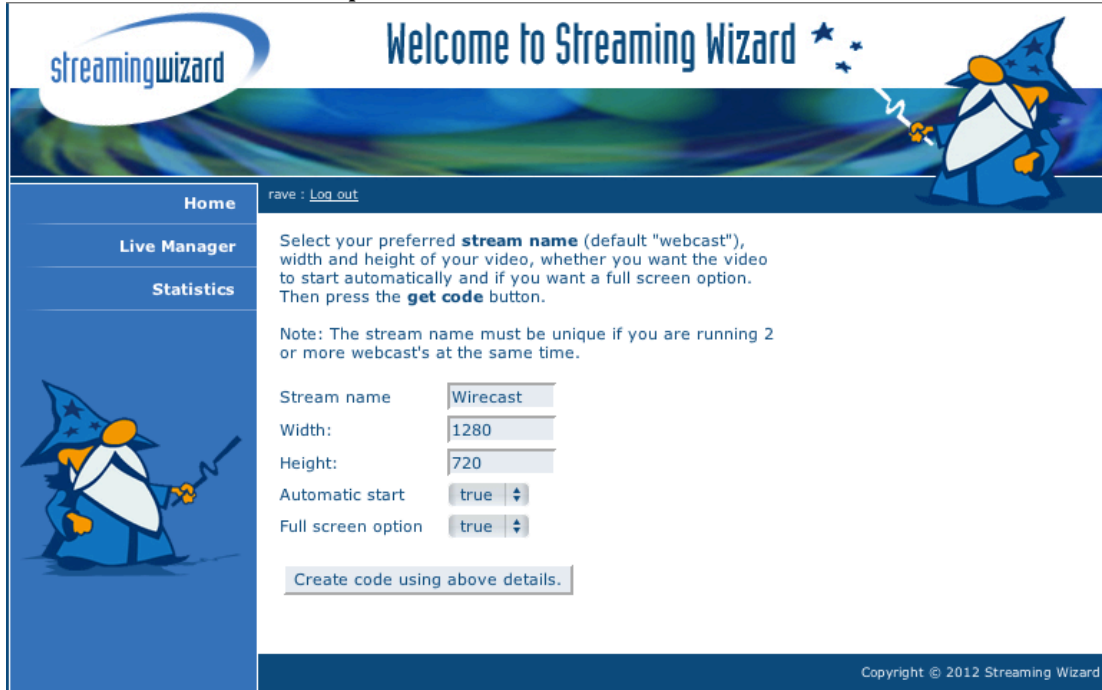
This is a demonstration/walkthrough on how to set up the NaSTA streaming server or any live broadcast using Wirecast. For the purposes of the demonstration, I have had to log in to create the screen shots necessary to be able to do this. The details that are shown, are not the ones you use, these are created when you enter in **your own** details into the streaming wizard.

Thank you

How to broadcast live with Wirecast using the Janet Server.

Step 1

Log in to nasta.streamingwizard.com and create your own web player to use for the event. Once you inputted the details in which you want, click the Create Code button. Below is an example of one that I have made.



The screenshot shows the Streaming Wizard website interface. At the top, there is a navigation bar with the 'streamingwizard' logo and the text 'Welcome to Streaming Wizard'. Below the navigation bar, there is a sidebar with links for 'Home', 'Live Manager', and 'Statistics'. The main content area is titled 'rave : Log out' and contains instructions for selecting a stream name, width, height, and other options. The form fields are as follows:

Stream name	<input type="text" value="Wirecast"/>
Width:	<input type="text" value="1280"/>
Height:	<input type="text" value="720"/>
Automatic start	<input checked="" type="checkbox" value="true"/>
Full screen option	<input checked="" type="checkbox" value="true"/>

Below the form fields is a button labeled 'Create code using above details.' The footer of the page contains the text 'Copyright © 2012 Streaming Wizard'.

Step 2

Ensure that you have the FMS URL and the embed code for the streaming. It will look similar to the one below.

Use the following details in your encoder:

FMS URL: `rtmp://195.195.131.195/rave`
Stream: Wirecast

Username: rave
Password: ***** (This should be provided to you)

Player code to cut and paste into your website:

```
<embed src='http://nasta.streamingwizard.com/player.swf'  
width='1280'  
height='720'  
allowscriptaccess='always'  
allowfullscreen='true'  
  
flashvars='streamer=rtmp://195.195.131.195:80/raveLive&file=Wirecast.flv&autostar  
t=true'  
>
```

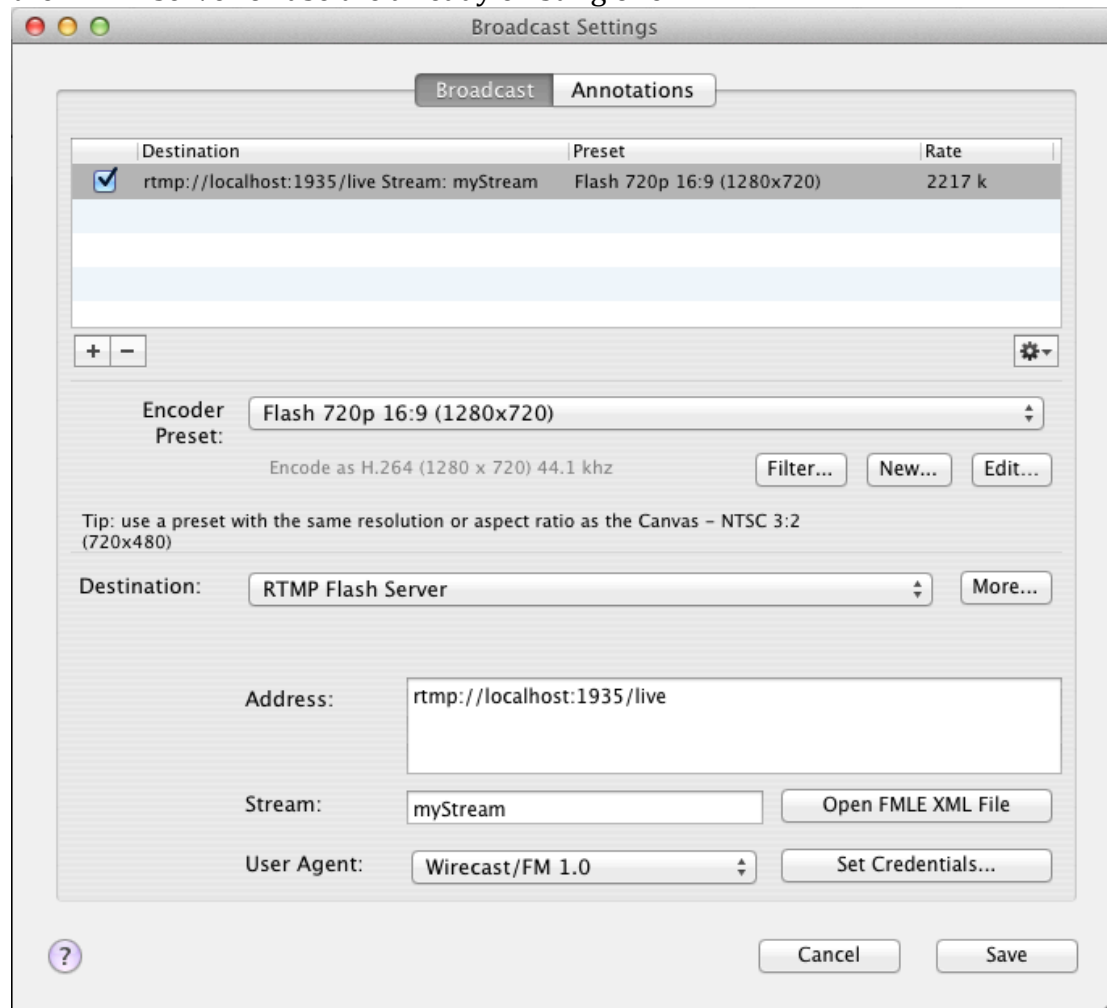
Step 3

Open wirecast and open the broadcast settings control. This is found in the broadcast menu at the top of the canvas.



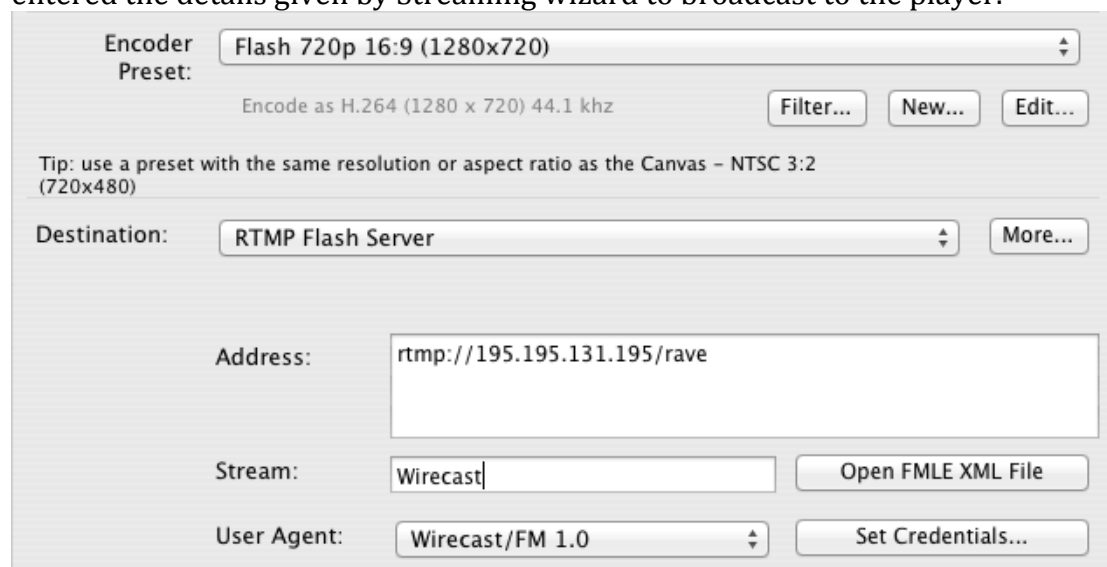
Step 4

Once Broadcast settings has been opened, you can either create a new line for the RTMP server or use the already existing one.



Step 5

Once either a new line or the existing line has been chosen, The destination and other details need to be entered, as can be seen in the image below, I have entered the details given by Streaming wizard to broadcast to the player.



Step 6

Before you finish setting up the connection, you must set your credentials. The credentials are your log in details for Streaming Wizard.

Enter your credentials:

Username:

Password:

Step 7

Now that you have entered all these details, click save and then you can begin your broadcast by using the broadcast button, when successfully broadcast the button will look like it does below. There is also a record feature that will allow you to record the streaming service directly to you HDD.

